

Contents lists available at [SciVerse ScienceDirect](http://SciVerse.Sciencedirect.com)

Journal of Financial Economics

journal homepage: www.elsevier.com/locate/jfec

Econometric measures of connectedness and systemic risk in the finance and insurance sectors[☆]

Monica Billio^{a,1}, Mila Getmansky^{b,2}, Andrew W. Lo^{c,d,*}, Lorian Pelizzon^{a,3}

^a University of Venice and SSV, Department of Economics, Fondamenta San Giobbe 873, 30100 Venice, Italy

^b Isenberg School of Management, University of Massachusetts, 121 Presidents Drive, Room 308C, Amherst, MA 01003, United States

^c MIT Sloan School of Management, 100 Main Street, E62-618, Cambridge, MA 02142, United States

^d AlphaSimplex Group, LLC, United States

ARTICLE INFO

Article history:

Received 18 July 2010

Received in revised form

10 November 2011

Accepted 15 November 2011

Available online 17 February 2012

JEL classification:

G12

G29

C51

Keywords:

Systemic risk

Financial institutions

Liquidity

Financial crises

ABSTRACT

We propose several econometric measures of connectedness based on principal-components analysis and Granger-causality networks, and apply them to the monthly returns of hedge funds, banks, broker/dealers, and insurance companies. We find that all four sectors have become highly interrelated over the past decade, likely increasing the level of systemic risk in the finance and insurance industries through a complex and time-varying network of relationships. These measures can also identify and quantify financial crisis periods, and seem to contain predictive power in out-of-sample tests. Our results show an asymmetry in the degree of connectedness among the four sectors, with banks playing a much more important role in transmitting shocks than other financial institutions.

© 2011 Elsevier B.V. All rights reserved.

1. Introduction

The Financial Crisis of 2007–2009 has created renewed interest in systemic risk, a concept originally associated

with bank runs and currency crises, but which is now applied more broadly to shocks to other parts of the financial system, e.g., commercial paper, money market funds, repurchase agreements, consumer finance, and

[☆] We thank the editor, Bill Schwert, two anonymous referees, Viral Acharya, Ben Branch, Mark Carey, Jayna Cummings, Mathias Drehmann, Philipp Hartmann, Blake LeBaron, Gaelle Lefol, Anil Kashyap, Andrei Kirilenko, Bing Liang, Bertrand Maillet, Stefano Marmi, Alain Monfort, Lasse Pedersen, Raghuram Rajan, Bernd Schwaab, Philip Strahan, René Stulz, and seminar participants at the NBER Summer Institute Project on Market Institutions and Financial Market Risk, Columbia University, New York University, the University of Rhode Island, the U.S. Securities and Exchange Commission, the Wharton School, University of Chicago, Vienna University, Brandeis University, UMASS Amherst, the IMF Conference on Operationalizing Systemic Risk Monitoring, Toulouse School of Economics, the American Finance Association 2010 Annual Meeting, the CREST-INSEE Annual Conference on Econometrics of Hedge Funds, the Paris Conference on Large Portfolios, Concentration and Granularity, the BIS Conference on Systemic Risk and Financial Regulation, and the Cambridge University CFAP Conference on Networks for helpful comments and discussion. We also thank Lorenzo Frattarolo, Michele Costola, and Laura Liviero for excellent research assistance. We thank Inquire Europe, the MIT Laboratory for Financial Engineering, and the NBER for their financial support.

* Corresponding author at: MIT Sloan School of Management, 100 Main Street, E62-618, Cambridge, MA 02142, United States. Tel.: +1 617 253 0920.

E-mail addresses: billio@unive.it (M. Billio), msherman@isenberg.umass.edu (M. Getmansky), alo@mit.edu (A.W. Lo), pelizzon@unive.it (L. Pelizzon).

¹ Tel.: +39 041 234 9170; fax: +39 041 234 9176.

² Tel.: +1 413 577 3308; fax: +1 413 545 3858.

³ Tel.: +39 041 234 9164; fax: +39 041 234 9176.

Over-The-Counter (OTC) derivatives markets. Although most regulators and policymakers believe that systemic events can be identified after the fact, a precise definition of systemic risk seems remarkably elusive, even after the demise of Bear Stearns and Lehman Brothers in 2008, the government takeover of American International Group (AIG) in that same year, the “Flash Crash” of May 6, 2010, and the European sovereign debt crisis of 2011–2012.

By definition, systemic risk involves the financial system, a collection of interconnected institutions that have mutually beneficial business relationships through which illiquidity, insolvency, and losses can quickly propagate during periods of financial distress. In this paper, we propose two econometric methods to capture this connectedness – principal components analysis and Granger-causality networks – and apply them to the monthly returns of four types of financial institutions: hedge funds, publicly traded banks, broker/dealers, and insurance companies. We use principal components analysis to estimate the number and importance of common factors driving the returns of these financial institutions, and we use pairwise Granger-causality tests to identify the network of statistically significant Granger-causal relations among these institutions.

Our focus on hedge funds, banks, broker/dealers, and insurance companies is not coincidental, but is motivated by the extensive business ties between them, many of which have emerged only in the last decade. For example, insurance companies have had little to do with hedge funds until recently. However, as they moved more aggressively into non-core activities such as insuring financial products, credit-default swaps, derivatives trading, and investment management, insurers created new business units that competed directly with banks, hedge funds, and broker/dealers. These activities have potential implications for systemic risk when conducted on a large scale (see Geneva Association, 2010). Similarly, the banking industry has been transformed over the last ten years, not only with the repeal of the Glass-Steagall Act in 1999, but also through financial innovations like securitization that have blurred the distinction between loans, bank deposits, securities, and trading strategies. The types of business relationships between these sectors have also changed, with banks and insurers providing credit to hedge funds but also competing against them through their own proprietary trading desks, and hedge funds using insurers to provide principal protection on their funds while simultaneously competing with them by offering capital-market-intermediated insurance such as catastrophe-linked bonds.

For banks, broker/dealers, and insurance companies, we confine our attention to publicly listed entities and use their monthly equity returns in our analysis. For hedge funds – which are private partnerships – we use their monthly reported net-of-fee fund returns. Our emphasis on market returns is motivated by the desire to incorporate the most current information in our measures; market returns reflect information more rapidly than non-market-based measures such as accounting variables. In our empirical analysis, we consider the individual

returns of the 25 largest entities in each of the four sectors, as well as asset- and market-capitalization-weighted return indexes of these sectors. While smaller institutions can also contribute to systemic risk,⁴ such risks should be most readily observed in the largest entities. We believe our study is the first to capture the network of causal relationships between the largest financial institutions across these four sectors.

Our empirical findings show that linkages within and across all four sectors are highly dynamic over the past decade, varying in quantifiable ways over time and as a function of market conditions. Over time, all four sectors have become highly interrelated, increasing the channels through which shocks can propagate throughout the finance and insurance sectors. These patterns are all the more striking in light of the fact that our analysis is based on monthly returns data. In a framework where all markets clear and past information is fully impounded into current prices, we should not be able to detect significant statistical relationships on a monthly timescale.

Our principal components estimates and Granger-causality tests also point to an important asymmetry in the connections: the returns of banks and insurers seem to have more significant impact on the returns of hedge funds and broker/dealers than vice versa. This asymmetry became highly significant prior to the Financial Crisis of 2007–2009, raising the possibility that these measures may be useful out-of-sample indicators of systemic risk. This pattern suggests that banks may be more central to systemic risk than the so-called shadow banking system. One obvious explanation for this asymmetry is the fact that banks lend capital to other financial institutions, hence, the nature of their relationships with other counterparties is not symmetric. Also, by competing with other financial institutions in non-traditional businesses, banks and insurers may have taken on risks more appropriate for hedge funds, leading to the emergence of a “shadow hedge-fund system” in which systemic risk cannot be managed by traditional regulatory instruments. Yet another possible interpretation is that because they are more highly regulated, banks and insurers are more sensitive to value-at-risk changes through their capital requirements, hence, their behavior may generate endogenous feedback loops with perverse externalities and spillover effects to other financial institutions.

In Section 2 we provide a brief review of the literature on systemic risk measurement, and describe our proposed measures in Section 3. The data used in our analysis are summarized in Section 4, and the empirical results are reported in Section 5. The practical relevance of our measures as early warning signals is considered in Section 6, and we conclude in Section 7.

⁴ For example, in a recent study commissioned by the G-20, the International Monetary Fund, Bank for International Settlements, and Financial Stability Board (2009) determined that systemically important institutions are not limited to those that are the largest, but also include others that are highly interconnected and that can impair the normal functioning of financial markets when they fail.

2. Literature review

Since there is currently no widely accepted definition of systemic risk, a comprehensive literature review of this rapidly evolving research area is difficult to provide. Like Justice Potter Stewart's description of pornography, systemic risk seems to be hard to define but we think we know it when we see it. Such an intuitive definition is hardly amenable to measurement and analysis, a prerequisite for macroprudential regulation of systemic risk. A more formal definition is *any set of circumstances that threatens the stability of or public confidence in the financial system*.⁵ Under this definition, the stock market crash of October 19, 1987 was not systemic, but the "Flash Crash" of May 6, 2010 was, because the latter event called into question the credibility of the price discovery process, unlike the former. Similarly, the 2006 collapse of the \$9 billion hedge fund Amaranth Advisors was not systemic, but the 1998 collapse of the \$5 billion hedge fund Long Term Capital Management (LTCM) was, because the latter event affected a much broader swath of financial markets and threatened the viability of several important financial institutions, unlike the former. And the failure of a few regional banks is not systemic, but the failure of a single highly interconnected money market fund can be.

While this definition does seem to cover most, if not all, of the historical examples of "systemic" events, it also implies that the risk of such events is multifactorial and unlikely to be captured by any single metric. After all, how many ways are there of measuring "stability" and "public confidence"? If we consider financial crises the realization of systemic risk, then Reinhart and Rogoff's (2009) volume encompassing eight centuries of crises is the new reference standard. If we focus, instead, on the four "L"s of financial crises – leverage, liquidity, losses, and linkages – several measures of the first three already exist.⁶ However, the one

common thread running through all truly systemic events is that they involve the financial system, i.e., the connections and interactions among financial stakeholders. Therefore, any measure of systemic risk must capture the degree of connectivity of market participants to some extent. Therefore, in this paper we choose to focus our attention on the fourth "L": linkages.

From a theoretical perspective, it is now well established that the likelihood of major financial dislocation is related to the degree of correlation among the holdings of financial institutions, how sensitive they are to changes in market prices and economic conditions (and the directionality, if any, of those sensitivities, i.e., causality), how concentrated the risks are among those financial institutions, and how closely linked they are with each other and the rest of the economy.⁷ Three measures have been proposed recently to estimate these linkages: Adrian and Brunnermeier's (2010) conditional value-at-risk (CoVaR), Acharya, Pedersen, Philippon, and Richardson's (2011) systemic expected shortfall (SES), and Huang, Zhou, and Zhu's (2011) distressed insurance premium (DIP). SES measures the expected loss to each financial institution conditional on the entire set of institutions' poor performance; CoVaR measures the value-at-risk (VaR) of financial institutions conditional on other institutions experiencing financial distress; and DIP measures the insurance premium required to cover distressed losses in the banking system.

The common theme among these three closely related measures is the magnitude of losses during periods when many institutions are simultaneously distressed. While this theme may seem to capture systemic exposures, it does so only to the degree that systemic losses are well represented in the historical data. But during periods of rapid financial innovation, newly connected parts of the financial system may not have experienced simultaneous losses, despite the fact that their connectedness implies an increase in systemic risk. For example, prior to the 2007–2009 crisis, extreme losses among monoline insurance companies did not coincide with comparable losses among hedge funds invested in mortgage-backed securities because the two sectors had only recently become connected through insurance contracts on collateralized debt obligations. Moreover, measures based on probabilities invariably depend on market volatility, and during periods of prosperity and growth, volatility is typically lower than in periods of distress. This implies lower estimates of systemic risk until after a volatility spike occurs, which reduces the usefulness of such a measure as an early warning indicator.

Of course, aggregate loss probabilities depend on correlations through the variance of the loss distribution (which is comprised of the variances and covariances of the individual institutions in the financial system). Over the last decade, correlations between distinct sectors of the financial system, like hedge funds and the banking

⁵ For an alternate perspective, see De Bandt and Hartmann's (2000) review of the systemic risk literature, which led them to the following definition:

A systemic crisis can be defined as a systemic event that affects a considerable number of financial institutions or markets in a strong sense, thereby severely impairing the general well-functioning of the financial system. While the "special" character of banks plays a major role, we stress that systemic risk goes beyond the traditional view of single banks' vulnerability to depositor runs. At the heart of the concept is the notion of "contagion," a particularly strong propagation of failures from one institution, market or system to another.

⁶ With respect to leverage, in the wake of the sweeping Dodd-Frank Financial Reform Bill of 2010, financial institutions are now obligated to provide considerably greater transparency to regulators, including the disclosure of positions and leverage. There are many measures of liquidity for publicly traded securities, e.g., Amihud and Mendelson (1986), Brennan, Chordia, and Subrahmanyam (1998), Chordia, Roll, and Subrahmanyam (2000, 2001, 2002), Glosten and Harris (1988), Lillo, Farmer, and Mantegna (2003), Lo, Mamaysky, and Wang (2001), Lo and Wang (2000), Pastor and Stambaugh (2003), and Sadka (2006). For private partnerships such as hedge funds, Lo (2001) and Getmansky, Lo, and Makarov (2004) propose serial correlation as a measure of their liquidity, i.e., more liquid funds have less serial correlation. Billio, Getmansky, and Pelizzon (2011) use Large-Small and VIX factors as liquidity proxies in hedge-fund analysis. And the systemic implications of losses are captured by CoVaR (Adrian and Brunnermeier, 2010) and SES (Acharya, Pedersen, Philippon, and Richardson, 2011).

⁷ See, for example, Acharya and Richardson (2009), Allen and Gale (1994, 1998, 2000), Battiston, Delli Gatti, Gallegati, Greenwald, and Stiglitz (2009), Brunnermeier (2009), Brunnermeier and Pedersen (2009), Gray (2009), Rajan (2006), Danielsson, Shin, and Zigrand (2011), and Reinhart and Rogoff (2009).

industry, tend to become much higher *during and after* a systemic shock occurs, not before. Therefore, by conditioning on extreme losses, measures like CoVaR and SES are estimated on data that reflect unusually high correlations among financial institutions. This, in turn, implies that during non-crisis periods, correlation will play little role in indicating a build-up of systemic risk using such measures.

Our approach is to simply measure correlation directly and unconditionally – through principal components analysis and by pairwise Granger-causality tests – and use these metrics to gauge the degree of connectedness of the financial system. During normal times, such connectivity may be lower than during periods of distress, but by focusing on unconditional measures of connectedness, we are able to detect new linkages between parts of the financial system that have nothing to do with simultaneous losses. In fact, while aggregate correlations may decline during bull markets – implying lower conditional loss probabilities – our measures show increased unconditional correlations among certain sectors and financial institutions, yielding finer-grain snapshots of linkages throughout the financial system.

Moreover, our Granger-causality-network measures have, by definition, a time dimension that is missing in conditional loss probability measures which are based on contemporaneous relations. In particular, Granger causality is defined as a predictive relation between past values of one variable and future values of another. Our out-of-sample analysis shows that these lead/lag relations are important, even after accounting for leverage measures, contemporaneous connections, and liquidity.

In summary, our two measures of connectedness complement the three conditional loss-probability-based measures, CoVaR, SES, and DIP, in providing direct estimates of the statistical connectivity of a network of financial institutions' asset returns.

Our work is also related to [Boyson, Stahel, and Stulz \(this issue\)](#) who investigate contagion from lagged bank- and broker-returns to hedge-fund returns. We consider these relations as well, but also consider the possibility of reverse contagion, i.e., causal effects from hedge funds to banks and broker/dealers. Moreover, we add a fourth sector – insurance companies – to the mix, which has become increasingly important, particularly during the most recent financial crisis.

Our paper is also related to [Allen, Babus, and Carletti \(this issue\)](#) who show that the structure of the network – where linkages among institutions are based on the commonality of asset holdings – matters in the generation and propagation of systemic risk. In our work, we empirically estimate the network structure of financial institutions generated by stock-return interconnections.

3. Measures of connectedness

In this section we present two measures of connectedness that are designed to capture changes in correlation and causality among financial institutions. In [Section 3.1](#), we construct a measure based on principal components analysis to identify increased correlation among the asset returns of financial institutions. To assign directionality to

these correlations, in [Sections 3.2](#) and [3.3](#) we use pairwise linear and nonlinear Granger-causality tests to estimate the network of statistically significant relations among financial institutions.

3.1. Principal components

Increased commonality among the asset returns of banks, broker/dealers, insurers, and hedge funds can be empirically detected by using principal components analysis (PCA), a technique in which the asset returns of a sample of financial institutions are decomposed into orthogonal factors of decreasing explanatory power (see [Muirhead, 1982](#) for an exposition of PCA). More formally, let R^i be the stock return of institution i , $i=1, \dots, N$, let the system's aggregate return be represented by the sum $R^S = \sum_i R^i$, and let $E[R^i] = \mu_i$ and $\text{Var}[R^i] = \sigma_i^2$. Then we have

$$\sigma_S^2 = \sum_{i=1}^N \sum_{j=1}^N \sigma_i \sigma_j E[z_i z_j]$$

where $z_k \equiv (R^k - \mu_k) / \sigma_k$, $k = i, j$, (1)

where z_k is the standardized return of institution k and σ_S^2 is the variance of the system. We now introduce N zero-mean uncorrelated variables ζ_k for which

$$E[\zeta_k \zeta_l] = \begin{cases} \lambda_k & \text{if } k=l, \\ 0 & \text{if } k \neq l \end{cases} \quad (2)$$

and all the higher-order co-moments are equal to those of the z 's, where λ_k is the k -th eigenvalue. We express the z 's as a linear combination of the ζ_k 's

$$z_i = \sum_{k=1}^N L_{ik} \zeta_k, \quad (3)$$

where L_{ik} is a factor loading for ζ_k for an institution i . Thus, we have

$$E[z_i z_j] = \sum_{k=1}^N \sum_{l=1}^N L_{ik} L_{jl} E[\zeta_k \zeta_l] = \sum_{k=1}^N L_{ik} L_{jk} \lambda_k, \quad (4)$$

$$\sigma_S^2 = \sum_{i=1}^N \sum_{j=1}^N \sum_{k=1}^N \sigma_i \sigma_j L_{ik} L_{jk} \lambda_k. \quad (5)$$

PCA yields a decomposition of the variance-covariance matrix of returns of the N financial institutions into the orthonormal matrix of loadings L (eigenvectors of the correlation matrix of returns) and the diagonal matrix of eigenvalues Λ . Because the first few eigenvalues usually explain most of the variation of the system, we focus our attention on only a subset $n < N$ of them. This subset captures a larger portion of the total volatility when the majority of returns tend to move together, as is often associated with crisis periods. Therefore, periods when this subset of principal components explains more than some fraction H of the total volatility are indicative of increased interconnectedness between financial institutions.⁸

⁸ In our framework, H is determined statistically as the threshold level that exhibits a statistically significant change in explaining the fraction of total volatility with respect to previous periods.

Defining the total risk of the system as $\Omega \equiv \sum_{k=1}^N \lambda_k$ and the risk associated with the first n principal components as $\omega_n \equiv \sum_{k=1}^n \lambda_k$, we compare the ratio of the two (i.e., the Cumulative Risk Fraction) to the prespecified critical threshold level H to capture periods of increased interconnectedness:

$$\frac{\omega_n}{\Omega} \equiv h_n \geq H. \tag{6}$$

When the system is highly interconnected, a small number n of N principal components can explain most of the volatility in the system, hence, h_n will exceed the threshold H . By examining the time variation in the magnitudes of h_n , we are able to detect increasing correlation among institutions, i.e., increased linkages and integration as well as similarities in risk exposures, which can contribute to systemic risk.

The contribution $PCAS_{i,n}$ of institution i to the risk of the system – conditional on a strong common component across the returns of all financial institutions ($h_n \geq H$) – is a univariate measure of connectedness for each company i , i.e.:

$$PCAS_{i,n} = \frac{1}{2} \frac{\sigma_i^2}{\sigma_S^2} \frac{\partial \sigma_S^2}{\partial \sigma_i^2} \Big|_{h_n \geq H}. \tag{7}$$

It is easy to show that this measure also corresponds to the exposure of institution i to the total risk of the system, measured as the weighted average of the square of the factor loadings of the single institution i to the first n principal components, where the weights are simply the eigenvalues. In fact:

$$PCAS_{i,n} = \frac{1}{2} \frac{\sigma_i^2}{\sigma_S^2} \frac{\partial \sigma_S^2}{\partial \sigma_i^2} \Big|_{h_n \geq H} = \sum_{k=1}^n \frac{\sigma_i^2}{\sigma_S^2} L_{ik}^2 \lambda_k \Big|_{h_n \geq H}. \tag{8}$$

Intuitively, since we are focusing on endogenous risk, this is both the contribution and the exposure of the i -th institution to the overall risk of the system given a strong common component across the returns of all institutions.

In an online appendix posted at <http://jfe.rochester.edu> we show how, in a Gaussian framework, this measure is related to the co-kurtosis of the multivariate distribution. When fourth co-moments are finite, PCAS captures the contribution of the i -th institution to the multivariate tail dynamics of the system.

3.2. Linear Granger causality

To investigate the dynamic propagation of shocks to the system, it is important to measure not only the degree of connectedness between financial institutions, but also the directionality of such relationships. To that end, we propose using Granger causality, a statistical notion of causality based on the relative forecast power of two time series. Time series j is said to “Granger-cause” time series i if past values of j contain information that helps predict i above and beyond the information contained in past

values of i alone. The mathematical formulation of this test is based on linear regressions of R_{t+1}^i on R_t^i and R_t^j .

Specifically, let R_t^i and R_t^j be two stationary time series, and for simplicity assume they have zero mean. We can represent their linear inter-relationships with the following model:

$$R_{t+1}^i = a^i R_t^i + b^{ij} R_t^j + e_{t+1}^i,$$

$$R_{t+1}^j = a^j R_t^j + b^{ji} R_t^i + e_{t+1}^j, \tag{9}$$

where e_{t+1}^i and e_{t+1}^j are two uncorrelated white noise processes, and a^i, a^j, b^{ij}, b^{ji} are coefficients of the model. Then, j Granger-causes i when b^{ij} is different from zero. Similarly, i Granger-causes j when b^{ji} is different from zero. When both of these statements are true, there is a feedback relationship between the time series.⁹

In an informationally efficient financial market, short-term asset-price changes should not be related to other lagged variables,¹⁰ hence, a Granger-causality test should not detect any causality. However, in the presence of value-at-risk constraints or other market frictions such as transactions costs, borrowing constraints, costs of gathering and processing information, and institutional restrictions on shortsales, we may find Granger causality among price changes of financial assets. Moreover, this type of predictability may not easily be arbitrated away precisely because of the presence of such frictions. Therefore, the degree of Granger causality in asset returns can be viewed as a proxy for return-spillover effects among market participants as suggested by Danielsson, Shin, and Zigrand (2011), Battiston, Delli Gatti, Gallegati, Greenwald, and Stiglitz (2009), and Buraschi Porchia, and Trojani (2010). As this effect is amplified, the tighter are the connections and integration among financial institutions, heightening the severity of systemic events as shown by Castiglionesi, Feriozzi, and Lorenzoni (2009) and Battiston, Delli Gatti, Gallegati, Greenwald, and Stiglitz (2009).

Accordingly, we propose a Granger-causality measure of connectedness to capture the lagged propagation of return spillovers in the financial system, i.e., the network of Granger-causal relations among financial institutions.

We consider a Generalized AutoRegressive Conditional Heteroskedasticity (GARCH)(1,1) baseline model of returns:

$$R_t^i = \mu_i + \sigma_{it} \epsilon_t^i, \quad \epsilon_t^i \sim \text{WN}(0, 1),$$

$$\sigma_{it}^2 = \omega_i + \alpha_i (R_{t-1}^i - \mu_i)^2 + \beta_i \sigma_{it-1}^2 \tag{10}$$

⁹ We use the “Bayesian Information Criterion” (BIC; see Schwarz, 1978) as the model-selection criterion for determining the number of lags in our analysis. Moreover, we perform F -tests of the null hypotheses that the coefficients $\{b^{ij}\}$ or $\{b^{ji}\}$ (depending on the direction of Granger causality under consideration) are equal to zero.

¹⁰ Of course, predictability may be the result of time-varying expected returns, which is perfectly consistent with dynamic rational expectations equilibria, but it is difficult to reconcile short-term predictability (at monthly and higher frequencies) with such explanations. See, for example, Getmansky, Lo, and Makarov (2004, Section 4) for a calibration exercise in which an equilibrium two-state Markov-switching model is used to generate autocorrelation in asset returns, with little success.

(footnote continued)

The statistical significance is determined through simulation as described in Appendix A.

conditional on the system information:

$$I_{t-1}^S = \mathfrak{E}(\{(R_{\tau}^i)_{\tau=-\infty}^{t-1}\}_{i=1}^N), \tag{11}$$

where $\mu_i, \omega_i, \alpha_i,$ and β_i are coefficients of the model, and $\mathfrak{E}(\cdot)$ represents the sigma algebra. Since our interest is in obtaining a measure of connectedness, we focus on the dynamic propagation of shocks from one institution to others, controlling for return autocorrelation for that institution.

A rejection of a linear Granger-causality test as defined in (9) on $\tilde{R}_t^i = R_t^i / \hat{\sigma}_{it}$, where $\hat{\sigma}_{it}$ is estimated with a GARCH(1,1) model to control for heteroskedasticity, is the simplest way to statistically identify the network of Granger-causal relations among institutions, as it implies that returns of the i -th institution linearly depend on the past returns of the j -th institution:

$$E[R_t^i | I_{t-1}^S] = E[R_t^i | \{(R_{\tau}^i - \mu_i)^2\}_{\tau=-\infty}^{t-2}, R_{t-1}^i, R_{t-1}^j, \{(R_{\tau}^j - \mu_j)^2\}_{\tau=-\infty}^{t-2}}]. \tag{12}$$

Now define the following indicator of causality:

$$(j \rightarrow i) = \begin{cases} 1 & \text{if } j \text{ Granger causes } i, \\ 0 & \text{otherwise} \end{cases} \tag{13}$$

and define $(j \rightarrow j) \equiv 0$. These indicator functions may be used to define the connections of the network of N financial institutions, from which we can then construct the following network-based measures of connectedness.

1. *Degree of Granger causality.* Denote by the *degree of Granger causality* (DGC) the fraction of statistically significant Granger-causality relationships among all $N(N-1)$ pairs of N financial institutions:

$$DGC \equiv \frac{1}{N(N-1)} \sum_{i=1}^N \sum_{j \neq i} (j \rightarrow i). \tag{14}$$

The risk of a systemic event is high when DGC exceeds a threshold K which is well above normal sampling variation as determined by our Monte Carlo simulation procedure (see [Appendix B](#)).

2. *Number of connections.* To assess the systemic importance of single institutions, we define the following simple counting measures, where S represents the system:

$$\#Out : (j \rightarrow S) |_{DGC \geq K} = \frac{1}{N-1} \sum_{i \neq j} (j \rightarrow i) |_{DGC \geq K},$$

$$\#In : (S \rightarrow j) |_{DGC \geq K} = \frac{1}{N-1} \sum_{i \neq j} (i \rightarrow j) |_{DGC \geq K},$$

$$\#In + Out : (j \leftrightarrow S) |_{DGC \geq K} = \frac{1}{2(N-1)} \sum_{i \neq j} (i \rightarrow j) + (j \rightarrow i) |_{DGC \geq K}. \tag{15}$$

$\#Out$ measures the number of financial institutions that are significantly Granger-caused by institution j , $\#In$ measures the number of financial institutions that significantly Granger-cause institution j , and $\#In + Out$ is the sum of these two measures.

3. *Sector-conditional connections.* Sector-conditional connections are similar to (15), but they condition on the

type of financial institution. Given M types (four in our case: banks, broker/dealers, insurers, and hedge funds), indexed by $\alpha, \beta = 1, \dots, M$, we have the following three measures:

$$\begin{aligned} \#Out\text{-to-Other} &: \left((j|\alpha) \rightarrow \sum_{\beta \neq \alpha} (S|\beta) \right) \Bigg|_{DGC \geq K} \\ &= \frac{1}{(M-1)N/M} \sum_{\beta \neq \alpha} \sum_{i \neq j} ((j|\alpha) \rightarrow (i|\beta)) \Bigg|_{DGC \geq K}, \end{aligned} \tag{16}$$

$$\begin{aligned} \#In\text{-from-Other} &: \left(\sum_{\beta \neq \alpha} (S|\beta) \rightarrow (j|\alpha) \right) \Bigg|_{DGC \geq K} \\ &= \frac{1}{(M-1)N/M} \sum_{\beta \neq \alpha} \sum_{i \neq j} ((i|\beta) \rightarrow (j|\alpha)) \Bigg|_{DGC \geq K}, \end{aligned} \tag{17}$$

$$\begin{aligned} \#In + Out - Other &: \left((j|\alpha) \leftrightarrow \sum_{\beta \neq \alpha} (S|\beta) \right) \Bigg|_{DGC \geq K} \\ &= \frac{\sum_{\beta \neq \alpha} \sum_{i \neq j} ((i|\beta) \rightarrow (j|\alpha)) + ((j|\alpha) \rightarrow (i|\beta))}{2(M-1)N/M} \Bigg|_{DGC \geq K}, \end{aligned} \tag{18}$$

where $\#Out\text{-to-Other}$ is the number of other types of financial institutions that are significantly Granger-caused by institution j , $\#In\text{-from-Other}$ is the number of other types of financial institutions that significantly Granger-cause institution j , and $\#In + Out - Other$ is the sum of the two.

4. *Closeness.* Closeness measures the shortest path between a financial institution and all other institutions reachable from it, averaged across all other financial institutions. To construct this measure, we first define j as weakly causally C -connected to i if there exists a causality path of length C between i and j , i.e., there exists a sequence of nodes k_1, \dots, k_{C-1} such that:

$$(j \rightarrow k_1) \times (k_1 \rightarrow k_2) \cdots \times (k_{C-1} \rightarrow i) \equiv (j \overset{C}{\rightarrow} i) = 1. \tag{19}$$

Denote by C_{ji} the length of the shortest C -connection between j to i :

$$C_{ji} \equiv \min_C \{C \in [1, N-1] : (j \overset{C}{\rightarrow} i) = 1\}, \tag{20}$$

where we set $C_{ji} = N-1$ if $(j \overset{C}{\rightarrow} i) = 0$ for all $C \in [1, N-1]$. The closeness measure for institution j is then defined as

$$C_{js} |_{DGC \geq K} = \frac{1}{N-1} \sum_{i \neq j} C_{ji} (j \overset{C_{ji}}{\rightarrow} i) |_{DGC \geq K}. \tag{21}$$

5. *Eigenvector centrality.* The *eigenvector centrality* measures the importance of a financial institution in a network by assigning relative scores to financial institutions based on how connected they are to the rest of the network. First, define the adjacency matrix A as the matrix with elements:

$$[A]_{ji} = (j \rightarrow i). \tag{22}$$

The eigenvector centrality measure is the eigenvector v of the adjacency matrix associated with eigenvalue

1, i.e., in matrix form:

$$Av = v. \tag{23}$$

Equivalently, the eigenvector centrality of j can be written as the sum of the eigenvector centralities of institutions Granger-caused by j :

$$v_j|_{DGC \geq K} = \sum_{i=1}^N [A]_{ji} v_i|_{DGC \geq K}. \tag{24}$$

If the adjacency matrix has non-negative entries, a unique solution is guaranteed to exist by the Perron–Frobenius theorem.

3.3. Nonlinear Granger causality

The standard definition of Granger causality is linear, hence, it cannot capture nonlinear and higher-order causal relationships. This limitation is potentially relevant for our purposes since we are interested in whether an increase in riskiness (i.e., volatility) in one financial institution leads to an increase in the riskiness of another. To capture these higher-order effects, we consider a second causality measure in this section that we call *nonlinear Granger causality*, which is based on a Markov-switching model of asset returns.¹¹ This nonlinear extension of Granger causality can capture the effect of one financial institution’s return on the future mean and variance of another financial institution’s return, allowing us to detect the volatility-based interconnectedness hypothesized by Danielsson, Shin, and Zigrand (2011), for example.

More formally, consider the case of hedge funds and banks, and let $Z_{h,t}$ and $Z_{b,t}$ be Markov chains that characterize the expected returns (μ) and volatilities (σ) of the two financial institutions, respectively, i.e.:

$$R_{j,t} = \mu_j(Z_{j,t}) + \sigma_j(Z_{j,t})u_{j,t}, \tag{25}$$

where $R_{j,t}$ is the excess return of institution j in period t , $j = h, b$, $u_{j,t}$ is independently and identically distributed (IID) over time, and $Z_{j,t}$ is a two-state Markov chain with transition probability matrix \mathbf{P}_{z_j} for institution j .

We can test the nonlinear causal interdependence between these two series by testing the two hypotheses of causality from $Z_{h,t}$ to $Z_{b,t}$ and vice versa (the general case of nonlinear Granger-causality estimation is considered in Appendix C). In fact, the joint stochastic process $Y_t \equiv (Z_{h,t}, Z_{b,t})$ is itself a first-order Markov chain with transition probabilities:

$$P(Y_t | Y_{t-1}) = P(Z_{h,t}, Z_{b,t} | Z_{h,t-1}, Z_{b,t-1}), \tag{26}$$

where all the relevant information from the past history of the process at time t is represented by the previous state, i.e., regimes at time $t-1$. Under the additional assumption that the transition probabilities do not vary over time, the process can be defined as a Markov chain with stationary transition probabilities, summarized by

the transition matrix \mathbf{P} . We can then decompose the joint transition probabilities as

$$\begin{aligned} P(Y_t | Y_{t-1}) &= P(Z_{h,t}, Z_{b,t} | Z_{h,t-1}, Z_{b,t-1}) \\ &= P(Z_{b,t} | Z_{h,t}, Z_{h,t-1}, Z_{b,t-1}) \times P(Z_{h,t} | Z_{h,t-1}, Z_{b,t-1}). \end{aligned} \tag{27}$$

According to this decomposition and the results in Appendix C, we run the following two tests of nonlinear Granger causality:

1. Granger non-causality from $Z_{h,t}$ to $Z_{b,t}$ ($Z_{h,t} \not\Rightarrow Z_{b,t}$):
Decompose the joint probability:

$$\begin{aligned} P(Z_{h,t}, Z_{b,t} | Z_{h,t-1}, Z_{b,t-1}) &= P(Z_{h,t} | Z_{b,t}, Z_{h,t-1}, Z_{b,t-1}) \\ &\quad \times P(Z_{b,t} | Z_{h,t-1}, Z_{b,t-1}). \end{aligned} \tag{28}$$

If $Z_{h,t} \Rightarrow Z_{b,t}$, the last term becomes

$$P(Z_{b,t} | Z_{h,t-1}, Z_{b,t-1}) = P(Z_{b,t} | Z_{b,t-1}). \tag{29}$$

2. Granger non-causality from $Z_{b,t}$ to $Z_{h,t}$ ($Z_{b,t} \not\Rightarrow Z_{h,t}$):
This requires that if $Z_{b,t} \Rightarrow Z_{h,t}$, then

$$P(Z_{h,t} | Z_{h,t-1}, Z_{b,t-1}) = P(Z_{h,t} | Z_{h,t-1}). \tag{30}$$

4. The data

For the main analysis, we use monthly returns data for hedge funds, broker/dealers, banks, and insurers, described in more detail in Sections 4.1 and 4.2. Summary statistics are provided in Section 4.3.

4.1. Hedge funds

We use individual hedge-fund data from the Lipper TASS database. We use the September 30, 2009 snapshot of the data, which includes 8770 hedge funds in both Live and Defunct databases.

Our hedge-fund index data consist of aggregate hedge-fund index returns from the Dow Jones Credit Suisse hedge fund database from January 1994 to December 2008, which are asset-weighted indexes of funds with a minimum of \$10 million in assets under management (AUM), a minimum one-year track record, and current audited financial statements. The following strategies are included in the total aggregate index (hereafter, known as Hedge funds): Dedicated Short Bias, Long/Short Equity, Emerging Markets, Distressed, Event Driven, Equity Market Neutral, Convertible Bond Arbitrage, Fixed Income Arbitrage, Multi-Strategy, and Managed Futures. The strategy indexes are computed and rebalanced monthly and the universe of funds is redefined on a quarterly basis. We use net-of-fee monthly excess returns. This database accounts for survivorship bias in hedge funds (Fung and Hsieh, 2000). Funds in the Lipper TASS database are similar to the ones used in the Dow Jones Credit Suisse indexes, however, Lipper TASS does not implement any restrictions on size, track record, or the presence of audited financial statements.

¹¹ Markov-switching models have been used to investigate systemic risk by Chan, Getmansky, Haas, and Lo (2006) and to measure value-at-risk by Billio and Pelizzon (2000).

4.2. Banks, broker/dealers, and insurers

Data for individual banks, broker/dealers, and insurers are obtained from the University of Chicago's Center for Research in Security Prices database, from which we select the monthly returns of all companies with Standard Industrial Classification (SIC) codes from 6000 to 6199 (banks), 6200 to 6299 (broker/dealers), and 6300 to 6499 (insurers). We also construct value-weighted indexes of banks (hereafter, called Banks),

broker/dealers (hereafter, called Brokers), and insurers (hereafter, called Insurers).

4.3. Summary statistics

Table 1 reports annualized mean, annualized standard deviation, minimum, maximum, median, skewness, kurtosis, and first-order autocorrelation coefficient ρ_1 for individual hedge funds, banks, broker/dealers, and insurers from January 1994 through December 2008.

Table 1

Summary statistics. Summary statistics for monthly returns of individual hedge funds, broker/dealers, banks, and insurers for the full sample: January 1994 to December 2008, and five time periods: 1994–1996, 1996–1998, 1999–2001, 2002–2004, and 2006–2008. The annualized mean, annualized standard deviation, minimum, maximum, median, skewness, kurtosis, and first-order autocorrelation are reported. We choose the 25 largest financial institutions (as determined by average AUM for hedge funds and average market capitalization for broker/dealers, insurers, and banks during the time period considered) in each of the four financial institution sectors.

Full sample								
	Mean (%)	SD (%)	Min (%)	Max (%)	Median (%)	Skew.	Kurt.	Autocorr.
Hedge funds	12	11	−7	8	12	−0.24	4.40	0.14
Brokers	23	39	−21	32	14	0.23	3.85	−0.02
Banks	16	26	−17	19	17	−0.05	3.71	−0.09
Insurers	15	28	−17	21	15	0.04	3.84	−0.06
January 1994–December 1996								
	Mean (%)	SD (%)	Min (%)	Max (%)	Median (%)	Skew.	Kurt.	Autocorr.
Hedge funds	14	15	−8	12	12	0.25	3.63	0.08
Brokers	23	29	−15	22	21	0.26	3.63	−0.09
Banks	29	23	−12	16	29	−0.05	2.88	0.00
Insurers	20	22	−11	17	16	0.20	3.18	−0.06
January 1996–December 1998								
	Mean (%)	SD (%)	Min (%)	Max (%)	Median (%)	Skew.	Kurt.	Autocorr.
Hedge funds	13	18	−15	11	18	−1.12	6.13	0.15
Brokers	31	43	−29	37	26	0.06	5.33	−0.03
Banks	34	30	−23	22	35	−0.53	5.17	−0.10
Insurers	24	29	−19	21	24	−0.13	3.60	−0.03
January 1999–December 2001								
	Mean (%)	SD (%)	Min (%)	Max (%)	Median (%)	Skew.	Kurt.	Autocorr.
Hedge funds	14	11	−6	9	11	0.08	3.99	0.15
Brokers	28	61	−26	55	−2	0.76	4.19	−0.03
Banks	13	33	−19	24	8	0.21	3.26	−0.10
Insurers	10	41	−22	34	2	0.62	4.21	−0.16
January 2002–December 2004								
	Mean (%)	SD (%)	Min (%)	Max (%)	Median (%)	Skew.	Kurt.	Autocorr.
Hedge funds	9	7	−4	5	9	−0.03	4.05	0.21
Brokers	10	32	−20	21	10	−0.11	3.13	−0.01
Banks	14	22	−14	15	15	−0.12	3.18	−0.12
Insurers	12	24	−17	16	14	−0.19	3.81	0.02
January 2006–December 2008								
	Mean (%)	SD (%)	Min (%)	Max (%)	Median (%)	Skew.	Kurt.	Autocorr.
Hedge funds	1	13	−12	5	10	−1.00	5.09	0.26
Brokers	−5	40	−33	27	6	−0.52	4.69	0.16
Banks	−24	37	−34	22	−8	−0.57	5.18	0.05
Insurers	−15	39	−40	28	1	−0.84	8.11	0.07

We choose the 25 largest financial institutions (as determined by average AUM for hedge funds and average market capitalization for broker/dealers, insurers, and banks during the time period considered) in each of the four index categories. Brokers have the highest annual mean of 23% and the highest standard deviation of 39%. Hedge funds have the lowest mean, 12%, and the lowest standard deviation, 11%. Hedge funds have the highest first-order autocorrelation of 0.14, which is particularly striking when compared to the small negative autocorrelations of broker/dealers (-0.02), banks (-0.09), and insurers (-0.06). This finding is consistent with the hedge-fund industry's higher exposure to illiquid assets and return-smoothing (see Getmansky, Lo, and Makarov, 2004).

We calculate the same statistics for different time periods that will be considered in the empirical analysis: 1994–1996, 1996–1998, 1999–2001, 2002–2004, and 2006–2008. These periods encompass both tranquil, boom, and crisis periods in the sample. For each 36-month rolling-window time period, the largest 25 hedge funds, broker/dealers, insurers, and banks are included. In the last period, 2006–2008, which is characterized by the recent Financial Crisis, we observe the lowest mean across all financial institutions: 1%, -5% , -24% , and -15% for hedge funds, broker/dealers, banks, and insurers, respectively. This period is also characterized by very large standard deviations, skewness, and kurtosis. Moreover, this period is unique, as all financial institutions exhibit positive first-order autocorrelations.

5. Empirical analysis

In this section, we implement the measures defined in Section 3 using historical data for individual company returns corresponding to the four sectors of the finance and insurance industries described in Section 4. Section 5.1 contains the results of the principal components analysis applied to returns of individual financial institutions, and Sections 5.2 and 5.3 report the outcomes of linear and nonlinear Granger-causality tests, respectively, including simple visualizations via network diagrams.

5.1. Principal components analysis

Since the heart of systemic risk is commonality among multiple institutions, we attempt to measure commonality through PCA applied to the individual financial and insurance companies described in Section 4 over the whole sample period, 1994–2008. The time-series results for the Cumulative Risk Fraction (i.e., eigenvalues) are presented in Fig. 1a. The time-series graph of eigenvalues for all principal components (PC1, PC2–10, PC11–20, and PC21–36) shows that the first 20 principal components capture the majority of return variation during the whole sample, but the relative importance of these groupings varies considerably. The time periods when few principal components explain a larger percentage of total variation are associated with an increased interconnectedness between financial institutions as described in Section 3.1. In particular, Fig. 1a shows that the first principal

component is very dynamic, capturing from 24% to 43% of return variation, increasing significantly during crisis periods. The PC1 eigenvalue was increasing from the beginning of the sample, peaking at 43% in August 1998 during the LTCM crisis, and subsequently decreased. The PC1 eigenvalue started to increase in 2002 and stayed high through 2005 (the period when the Federal Reserve intervened and raised interest rates), declining slightly in 2006–2007, and increasing again in 2008, peaking in October 2008. As a result, the first principal component explained 37% of return variation over the Financial Crisis of 2007–2009. In fact, the first ten components explained 83% of the return variation over the recent financial crisis, which was the highest compared to all other subperiods.

In addition, we tabulate eigenvalues and eigenvectors from the principal components analysis over five time periods: 1994–1996, 1996–1998, 1999–2001, 2002–2004, and 2006–2008. The results in Table 2 show that the first ten principal components capture 67%, 77%, 72%, 73%, and 83% of the variability among financial institutions in these five time periods, respectively. The first principal component explains 33% of the return variation, on average. The first ten principal components explain 74% of the return variation, on average, and the first 20 principal components explain 91% of the return variation, on average, as shown by the Cumulative Risk Fractions in Fig. 1a.

We also estimate the variance of the system, σ_s^2 , from the GARCH(1,1) model.¹² Fig. 1b depicts the system variance from January 1994 to December 2008. Both the system variance and the Cumulative Risk Fraction increase during the LTCM crisis (August 1998) and the Financial Crisis of 2007–2009 (October 2008) periods. The correlation between these two aggregate indicators is 0.41. Not only is the first principal component able to explain a large proportion of the total variance during these crisis periods, but the system variance greatly increased as well.

Table 2 contains the mean, minimum, and maximum of our PCAS measures defined in (8) for the 1994–1996, 1996–1998, 1999–2001, 2002–2004, and 2006–2008 periods. These measures are quite persistent over time for all financial and insurance institutions, but we find variation in the sensitivities of the financial sectors to the four principal components. PCAS 1–20 for broker/dealers, banks, and insurers are, on average, 0.85, 0.30, and 0.44, respectively, for the first 20 principal components. This is compared to 0.12 for hedge funds, which represents the lowest average sensitivity out of the four sectors. However, we also find variation in our PCAS measure for individual hedge funds. For example, the maximum PCAS 1–20 for hedge funds in the 2006–2008 time period is 1.91.

¹² For every 36-month window, we calculate the average of returns for all 100 institutions and we estimate a GARCH(1,1) model on the resulting time series. For each window, we select the GARCH variance of the last observation. We prefer to report the variance of the system estimated with the GARCH(1,1) model rather than just the variance estimated for different windows because in this way, we have a measure that is reacting earlier to the shocks. However, even if we use the variance for each window, we still observe similar dynamics, only smoothed.

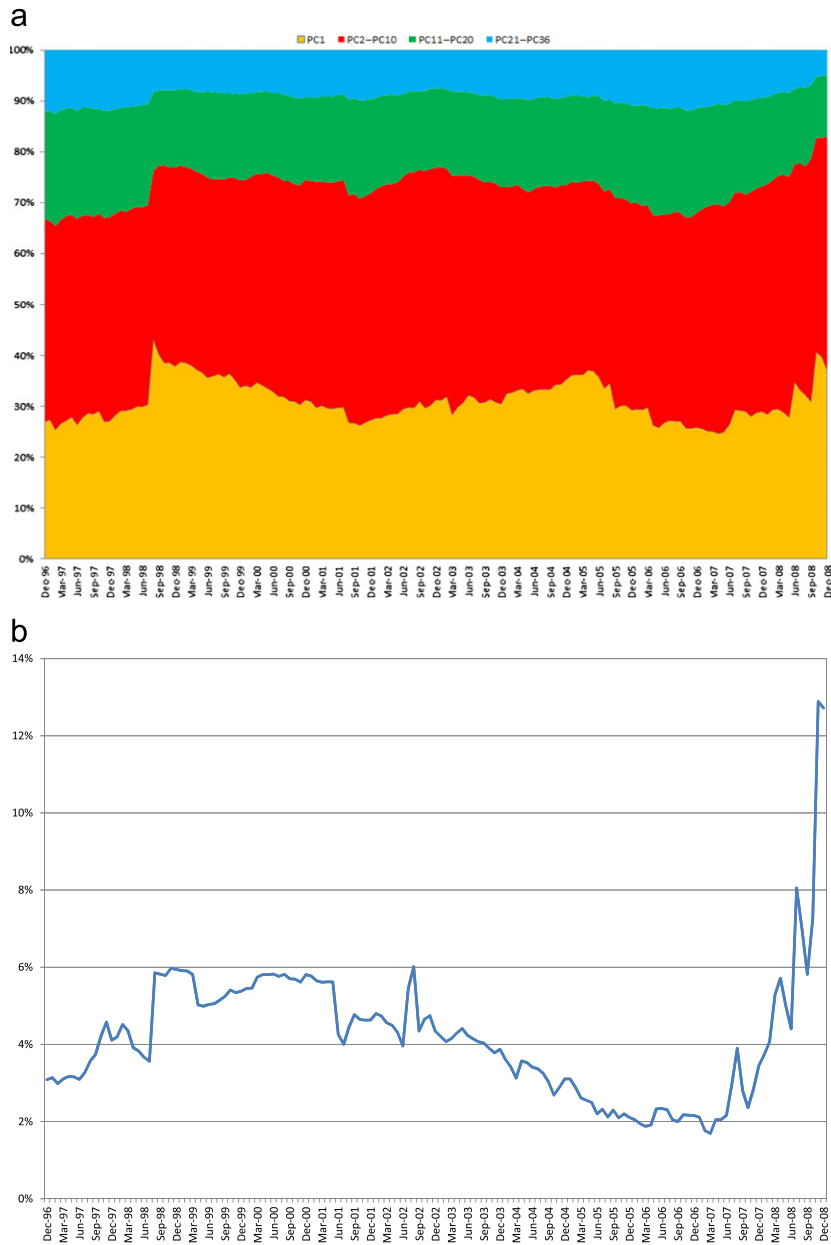


Fig. 1. Principal components analysis of the monthly standardized returns of individual hedge funds, broker/dealers, banks, and insurers over January 1994 to December 2008: (a) 36-month rolling-window estimates of the Cumulative Risk Fraction (i.e., eigenvalues) that correspond to the fraction of total variance explained by principal components 1–36 (PC 1, PC 2–10, PC 11–20, and PC 21–36); (b) system variance from the GARCH(1,1) model.

As a result, hedge funds are not greatly exposed to the overall risk of the system of financial institutions. Broker/dealers, banks, and insurers have greater PCAS, thus, result in greater connectedness. However, we still observe large cross-sectional variability, even among hedge funds.¹³

¹³ We repeated the analysis by filtering out heteroskedasticity with a GARCH(1,1) model and adjusting for autocorrelation in hedge-fund returns using the algorithm proposed by Getmansky, Lo, and Makarov (2004), and the results are qualitatively the same. These results are available upon request.

We explore the out-of-sample performance of our PCAS measures (individually and jointly with our Granger-causality-network measures) during the crisis periods in Section 6.

5.2. Linear Granger-causality tests

To fully appreciate the impact of Granger-causal relationships among various financial institutions, we provide a visualization of the results of linear Granger-causality tests presented in Section 3.2, applied over 36-month rolling subperiods to the 25 largest institutions (as determined by average AUM for hedge funds and average

Table 2

Summary statistics for PCAS measures. Mean, minimum, and maximum values for PCAS 1, PCAS 1–10, and PCAS 1–20. These measures are based on the monthly returns of individual hedge funds, broker/dealers, banks, and insurers for the five time periods: 1994–1996, 1996–1998, 1999–2001, 2002–2004, and 2006–2008. Cumulative Risk Fraction (i.e., eigenvalues) is calculated for PC 1, PC 1–10, and PC 1–20 for all five time periods.

PCAS $\times 10^5$					PCAS $\times 10^5$				
Sector		PCAS 1	PCAS 1–10	PCAS 1–20	Sector		PCAS 1	PCAS 1–10	PCAS 1–20
January 1994–December 1996					January 2002–December 2004				
Hedge funds	Mean	0.04	0.19	0.24	Hedge funds	Mean	0.01	0.04	0.04
	Min	0.00	0.00	0.00		Min	0.00	0.00	0.00
	Max	0.18	1.08	1.36		Max	0.22	0.28	0.32
Brokers	Mean	0.22	0.50	0.65	Brokers	Mean	0.31	0.53	0.65
	Min	0.01	0.12	0.20		Min	0.02	0.14	0.21
	Max	0.52	1.19	1.29		Max	1.05	1.55	1.91
Banks	Mean	0.14	0.31	0.42	Banks	Mean	0.16	0.25	0.30
	Min	0.02	0.13	0.16		Min	0.02	0.08	0.10
	Max	0.41	0.90	1.45		Max	0.51	0.60	0.76
Insurers	Mean	0.12	0.29	0.40	Insurers	Mean	0.12	0.28	0.37
	Min	0.01	0.12	0.15		Min	0.01	0.11	0.13
	Max	0.42	1.32	2.23		Max	0.40	0.91	1.14
January 1996–December 1998					January 2006–December 2008				
Hedge funds	Mean	0.04	0.11	0.13	Hedge funds	Mean	0.02	0.10	0.11
	Min	0.00	0.00	0.00		Min	0.00	0.00	0.00
	Max	0.15	0.44	0.55		Max	0.16	1.71	1.91
Brokers	Mean	0.22	0.62	0.71	Brokers	Mean	0.21	0.41	0.51
	Min	0.02	0.05	0.09		Min	0.05	0.12	0.16
	Max	0.63	3.79	4.06		Max	0.53	1.88	3.00
Banks	Mean	0.13	0.23	0.28	Banks	Mean	0.12	0.42	0.46
	Min	0.05	0.13	0.16		Min	0.00	0.13	0.14
	Max	0.21	0.39	0.56		Max	0.34	1.43	1.54
Insurers	Mean	0.10	0.24	0.30	Insurers	Mean	0.25	0.47	0.51
	Min	0.02	0.06	0.11		Min	0.01	0.05	0.06
	Max	0.33	1.57	2.08		Max	0.71	1.76	1.84
January 1999–December 2001									
Hedge funds	Mean	0.00	0.05	0.07					
	Min	0.00	0.00	0.00					
	Max	0.03	0.24	0.28					
Brokers	Mean	0.12	1.30	1.71					
	Min	0.00	0.06	0.11					
	Max	0.44	5.80	7.14					
Banks	Mean	0.20	0.33	0.42					
	Min	0.05	0.09	0.13					
	Max	0.71	1.45	1.93					
Insurers	Mean	0.29	0.52	0.63					
	Min	0.03	0.18	0.25					
	Max	0.76	2.30	3.00					
					Cumulative Risk Fraction				
					Sample period		PC 1	PC 1–10	PC 1–20
					Hedge funds, Brokers, Banks, Insurers				
					January 1994–December 1996	27	67%	88%	
					January 1996–December 1998	38	77%	92%	
					January 1999–December 2001	27	72%	90%	
					January 2002–December 2004	35	73%	91%	
					January 2006–December 2008	37	83%	95%	

market capitalization for broker/dealers, insurers, and banks during the time period considered) in each of the four index categories.¹⁴

The composition of this sample of 100 financial institutions changes over time as assets under management change, and as financial institutions are added or deleted

¹⁴ Given that hedge-fund returns are only available monthly, we impose a minimum of 36 months to obtain reliable estimates of Granger-causal relationships. We also used a rolling window of 60 months to control the robustness of the results. Results are provided upon request.

from the sample. Granger-causality relationships are drawn as straight lines connecting two institutions, color-coded by the type of institution that is “causing” the relationship, i.e., the institution at date- t which Granger-causes the returns of another institution at date $t + 1$. Green indicates a broker, red indicates a hedge fund, black indicates an insurer, and blue indicates a bank. Only those relationships significant at the 5% level are depicted. To conserve space, we tabulate results only for two of the 145 36-month rolling-window subperiods in Figs. 2 and 3: 1994–1996 and 2006–2008. These are representative time periods encompassing both tranquil

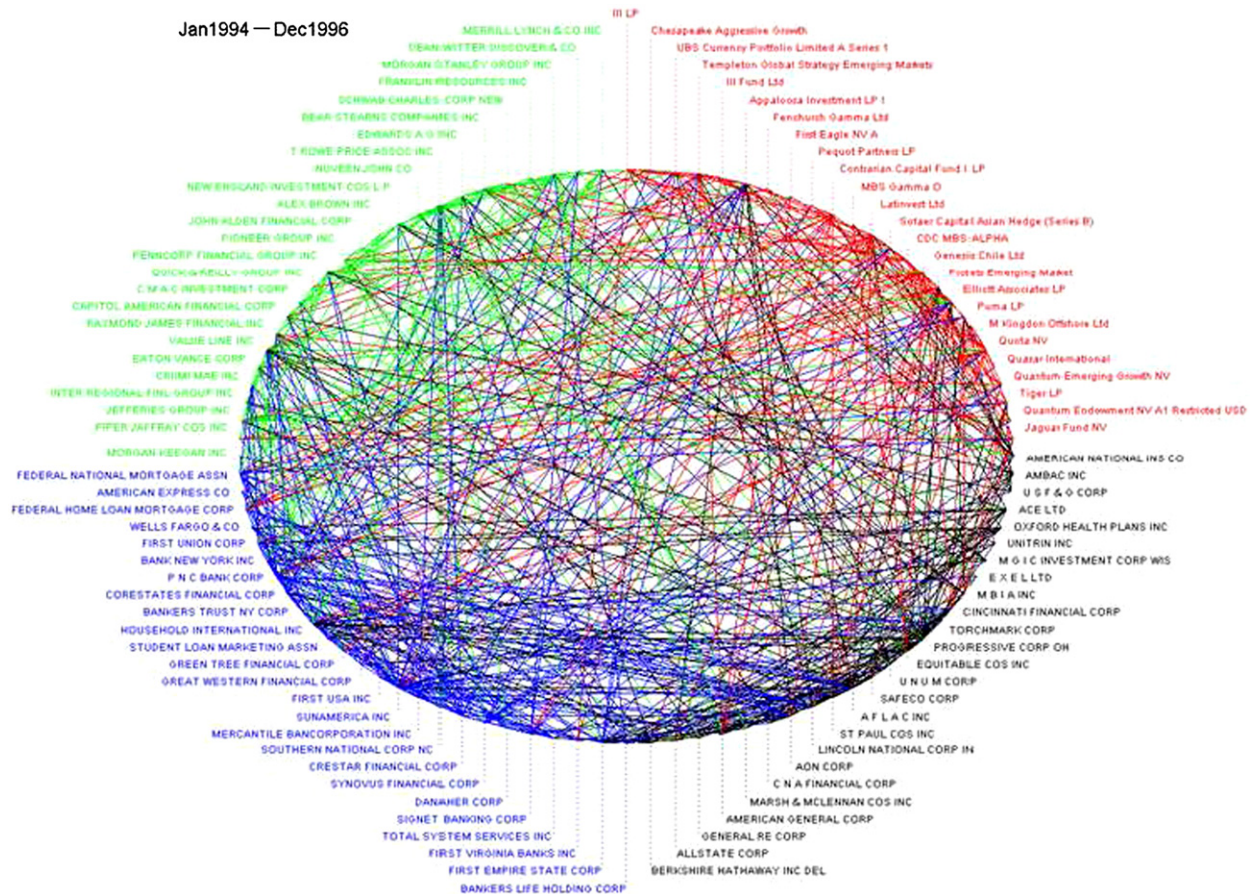


Fig. 2. Network diagram of linear Granger-causality relationships that are statistically significant at the 5% level among the monthly returns of the 25 largest (in terms of average market cap and AUM) banks, broker/dealers, insurers, and hedge funds over January 1994 to December 1996. The type of institution causing the relationship is indicated by color: green for broker/dealers, red for hedge funds, black for insurers, and blue for banks. Granger-causality relationships are estimated including autoregressive terms and filtering out heteroskedasticity with a GARCH(1,1) model.

and crisis periods in the sample.¹⁵ We see that the number of connections between different financial institutions dramatically increases from 1994–1996 to 2006–2008.

For our five time periods: (1994–1996, 1996–1998, 1999–2001, 2002–2004, and 2006–2008), we also provide summary statistics for the monthly returns of the 100 largest (with respect to market value and AUM) financial institutions in Table 3, including the asset-weighted autocorrelation, the normalized number of connections,¹⁶ and the total number of connections.

We find that Granger-causality relationships are highly dynamic among these financial institutions. Results are presented in Table 3 and Figs. 2 and 3. For example, the total number of connections between financial institutions

was 583 in the beginning of the sample (1994–1996), but it more than doubled to 1244 at the end of the sample (2006–2008). We also find that during and before financial crises, the financial system becomes much more interconnected in comparison to more tranquil periods. For example, the financial system was highly interconnected during the 1998 LTCM crisis and the most recent Financial Crisis of 2007–2009. In the relatively tranquil period of 1994–1996, the total number of connections as a percentage of all possible connections was 6% and the total number of connections among financial institutions was 583. Just before and during the LTCM 1998 crisis (1996–1998), the number of connections increased by 50% to 856, encompassing 9% of all possible connections. In 2002–2004, the total number of connections was just 611 (6% of total possible connections), and that more than doubled to 1244 connections (13% of total possible connections) in 2006–2008, which was right before and during the recent Financial Crisis of 2007–2009 according to Table 3. Both the 1998 LTCM crisis and the Financial Crisis of 2007–2009 were associated with liquidity and credit problems. The increase in interconnections between financial institutions is a significant systemic risk indicator, especially for the

¹⁵ To fully appreciate the dynamic nature of these connections, we have created a short animation using 36-month rolling-window network diagrams updated every month from January 1994 to December 2008, which can be viewed at <http://web.mit.edu/alo/www>.

¹⁶ The normalized number of connections is the fraction of all statistically significant connections (at the 5% level) between the N financial institutions out of all $N(N-1)$ possible connections.

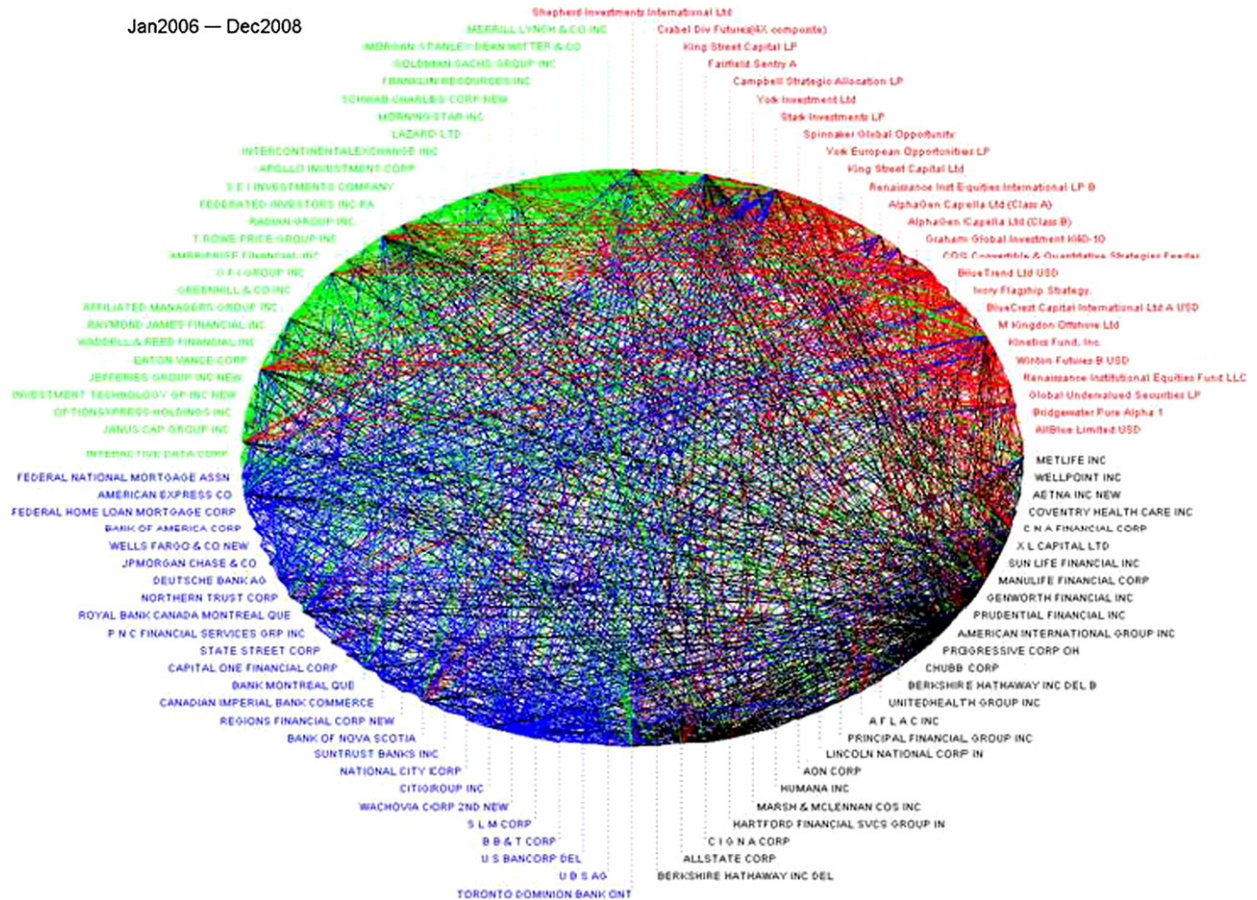


Fig. 3. Network diagram of linear Granger-causality relationships that are statistically significant at the 5% level among the monthly returns of the 25 largest (in terms of average market cap and AUM) banks, broker/dealers, insurers, and hedge funds over January 2006 to December 2008. The type of institution causing the relationship is indicated by color: green for broker/dealers, red for hedge funds, black for insurers, and blue for banks. Granger-causality relationships are estimated including autoregressive terms and filtering out heteroskedasticity with a GARCH(1,1) model.

Financial Crisis of 2007–2009 which experienced the largest number of interconnections compared to other time periods.¹⁷

The time series of the number of connections as a percent of all possible connections is depicted in black in Fig. 4, against a threshold of 0.055, the 95th percentile of the simulated distribution obtained under the hypothesis of no causal relationships, depicted in a thin line. Following the theoretical framework of Section 3.2, this figure displays the DGC measure which indicates greater connectedness when DGC exceeds the threshold. According to Fig. 4, the number of connections is large and significant during the 1998 LTCM crisis, 2002–2004 (a period of low interest rates and high leverage among financial institutions), and the recent Financial Crisis of 2007–2009.

If we compare Figs. 4 and 1, we observe that all the aggregate indicators – the fraction explained by the first PC (h_1), the number of connections as a percent of all

possible connections, and the financial system variance from the GARCH model – move in tandem during the two financial crises of 1998 and 2008, respectively. However, there are several periods where they move in opposite directions, e.g., 2002–2005. We find that these measures exhibit statistically significant contemporaneous and lagged correlations. For example, contemporaneous correlation between h_1 and the number of connections is 0.50, and correlation between system variance and the number of connections is 0.43. However, these connectedness measures are not perfectly correlated. For example, during 2001–2006, the system variance was decreasing, but other measures were increasing. As a result, all these measures seem to be capturing different facets of connectedness, as suggested by the out-of-sample analysis in Section 6.¹⁸

By measuring Granger-causality-network connections among individual financial institutions, we find that

¹⁷ The results are similar when we adjust for the Standard & Poor's (S&P) 500, and are available upon request.

¹⁸ More detailed analysis of the significance of Granger-causal relationships is provided in the robustness analysis of Appendix B.

Table 3

Summary statistics of asset-weighted autocorrelations and linear Granger-causality relationships.

Summary statistics of asset-weighted autocorrelations and linear Granger-causality relationships (at the 5% level of statistical significance) among the monthly returns of the largest 25 banks, broker/dealers, insurers, and hedge funds (as determined by average AUM for hedge funds and average market capitalization for broker/dealers, insurers, and banks during the time period considered) for five sample periods: 1994–1996, 1996–1998, 1999–2001, 2002–2004, and 2006–2008. The normalized number of connections, and the total number of connections for all financial institutions, hedge funds, broker/dealers, banks, and insurers are calculated for each sample including autoregressive terms and filtering out heteroskedasticity with a GARCH(1,1) model.

Sector	Asset-weighted autocorr	No. of connections as % of all possible connections				No. of connections			
		TO				TO			
		Hedge funds (%)	Brokers (%)	Banks (%)	Insurers (%)	Hedge funds	Brokers	Banks	Insurers
January 1994–December 1996									
FROM									
All	−0.07			6%			583		
Hedge funds	0.03	7	3	6	6	41	21	36	37
Brokers	−0.15	3	5	6	4	18	29	36	24
Banks	−0.03	6	7	9	7	40	46	54	44
Insurers	−0.10	5	6	6	9	33	38	35	51
January 1996–December 1998									
FROM									
All	−0.03			9%			856		
Hedge funds	0.08	14	6	5	3	82	38	30	20
Brokers	−0.04	13	9	9	9	81	53	54	57
Banks	−0.09	11	8	11	10	71	52	65	64
Insurers	0.02	9	9	7	6	57	54	44	34
January 1999–December 2001									
FROM									
All	−0.09			5%			520		
Hedge funds	0.17	5	5	5	9	32	32	33	58
Brokers	0.03	8	9	3	5	53	52	19	29
Banks	−0.09	5	3	4	7	30	17	25	42
Insurers	−0.20	5	3	2	6	32	16	14	36
January 2002–December 2004									
FROM									
All	−0.08			6%			611		
Hedge funds	0.20	10	3	9	5	61	20	56	29
Brokers	−0.09	8	4	4	6	53	23	26	39
Banks	−0.14	9	3	4	5	55	16	24	30
Insurers	0.00	8	6	9	6	48	40	55	36
January 2006–December 2008									
FROM									
All	0.08			13%			1244		
Hedge funds	0.23	10	13	5	13	57	82	31	83
Brokers	0.23	12	17	9	12	78	102	55	73
Banks	0.02	23	12	10	9	142	74	58	54
Insurers	0.12	13	16	12	16	84	102	73	96

during the 1998 LTCM crisis (1996–1998 period), hedge funds were greatly interconnected with other hedge funds, banks, broker/dealers, and insurers. Their impact on other financial institutions was substantial, though less than the total impact of other financial institutions on them. In the aftermath of the crisis (1999–2001 and 2002–2004 time periods), the number of financial connections decreased, especially links affecting hedge funds. The total number of connections clearly started to

increase just before and at the beginning of the recent Financial Crisis of 2007–2009 (2006–2008 time period). In that time period, hedge funds had significant bilateral relationships with insurers and broker/dealers. Hedge funds were highly affected by banks (23% of total possible connections), though they did not reciprocate in affecting the banks (5% of total possible connections). The number of significant Granger-causal relations from banks to hedge funds, 142, was the highest between these two

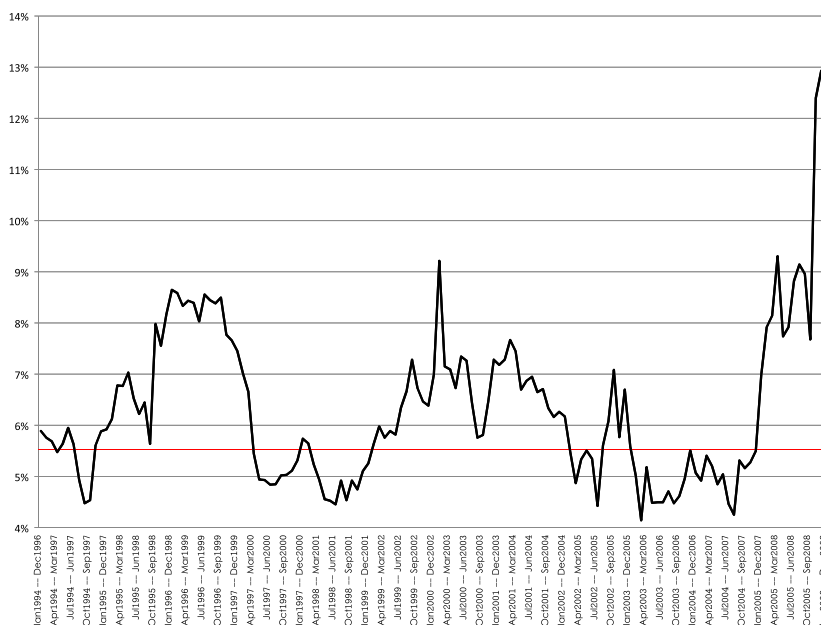


Fig. 4. Number of connections as a percentage of all possible connections. The time series of linear Granger-causality relationships (at the 5% level of statistical significance) among the monthly returns of the largest 25 banks, broker/dealers, insurers, and hedge funds (as determined by average AUM for hedge funds and average market capitalization for broker/dealers, insurers, and banks during the time period considered) for 36-month rolling-window sample periods from January 1994 to December 2008. The number of connections as a percentage of all possible connections (our DGC measure) is depicted in black against 0.055, the 95% of the simulated distribution obtained under the hypothesis of no causal relationships depicted in a thin line. The number of connections is estimated for each sample including autoregressive terms and filtering out heteroskedasticity with a GARCH(1,1) model.

sectors across all five sample periods. In comparison, hedge funds Granger-caused only 31 banks. These results for the largest individual financial institutions suggest that banks may be of more concern than hedge funds from the perspective of connectedness, though hedge funds may be the “canary in the coal mine” that experience losses first when financial crises hit.¹⁹

Lo (2002) and Getmansky, Lo, and Makarov (2004) suggest using return autocorrelations to gauge the illiquidity risk exposure, hence, we report asset-weighted autocorrelations in Table 3. We find that the asset-weighted autocorrelations for all financial institutions were negative for the first four time periods, however, in 2006–2008, the period that includes the recent financial crisis, the autocorrelation becomes positive. When we separate the asset-weighted autocorrelations by sector, we find that during all periods, hedge-fund asset-weighted autocorrelations were positive, but were mostly negative for all other financial institutions.²⁰ However, in the last period (2006–2008), the asset-weighted autocorrelations became positive for all financial institutions. These results suggest that the period of the Financial Crisis of 2007–2009 exhibited the most illiquidity and connectivity among financial institutions.

¹⁹ These results are also consistent if we consider indexes of hedge funds, broker/dealers, banks, and insurers. The results are available in an online appendix posted at <http://jfe.rochester.edu>.

²⁰ Starting in the October 2002–September 2005 period, the overall system and individual financial-institution 36-month rolling-window autocorrelations became positive and remained positive through the end of the sample.

In summary, we find that, on average, all companies in the four sectors we studied have become highly inter-related and generally less liquid over the past decade, increasing the level of connectedness in the finance and insurance industries.

To separate contagion and common-factor exposure, we regress each company’s monthly returns on the S&P 500 and re-run the linear Granger-causality tests on the residuals. We find the same pattern of dynamic interconnect-edness between financial institutions, and the resulting network diagrams are qualitatively similar to those with raw returns, hence, we omit them to conserve space.²¹ We also explore whether our connectedness measures are related to return predictability, which we capture via the following factors: inflation, industrial production growth, the Fama-French factors, and liquidity (detailed results are reported in an online appendix posted at <http://jfe.rochester.edu>). We find that our main Granger-causality results still hold after adjusting for these sources of predictability. It appears that connections between financial institutions are not contemporaneously priced and cannot be exploited as a trading strategy. The analysis on predictability highlights the fact that our measures are not related to traditional macroeconomic or Fama-French firm-specific factors, and are capturing connections beyond the usual common drivers of asset-return fluctuations.

For completeness, in Table 4 we present summary statistics for the other network measures proposed in

²¹ Network diagrams for residual returns (from a market-model regression against the S&P 500) are available upon request.

Table 4

Summary statistics of asset-weighted autocorrelations and linear Granger-causality relationships. Summary statistics of asset-weighted autocorrelations and linear Granger-causality relationships (at the 5% level of statistical significance) among the monthly returns of the largest 25 banks, broker/dealers, insurers, and hedge funds (as determined by average AUM for hedge funds and average market capitalization for broker/dealers, insurers, and banks during the time period considered) for five sample periods: 1994–1996, 1996–1998, 1999–2001, 2002–2004, and 2006–2008. The normalized number of connections, and the total number of connections for all financial institutions, hedge funds, broker/dealers, banks, and insurers are calculated for each sample including autoregressive terms and filtering out heteroskedasticity with a GARCH(1,1) model.

	In			Out			In+Out			In-from-Other			Out-to-Other			In+Out-Other			Closeness			Eigenvector centrality		
	Min	Mean	Max	Min	Mean	Max	Min	Mean	Max	Min	Mean	Max	Min	Mean	Max	Min	Mean	Max	Min	Mean	Max	Min	Mean	Max
January 1994–December 1996																								
Hedge funds	1	5.28	16	0	5.40	15	3	10.68	22	0	3.64	16	0	3.76	13	1	7.40	16	1.85	5.91	99.00	0.00	0.07	0.25
Brokers	0	5.36	13	1	4.28	9	3	9.64	19	0	4.52	11	0	3.56	9	2	8.08	17	1.91	1.96	1.99	0.01	0.05	0.17
Banks	2	6.44	24	1	7.36	30	4	13.80	36	1	5.00	21	1	5.76	26	3	10.76	29	1.70	1.93	1.99	0.00	0.09	0.32
Insurers	1	6.24	16	1	6.28	29	5	12.52	31	0	4.76	13	0	4.96	22	2	9.72	24	1.71	1.94	1.99	0.01	0.08	0.38
January 1996–December 1998																								
Hedge funds	0	11.64	49	2	6.80	22	4	18.44	63	0	8.36	34	0	3.52	14	1	11.88	42	1.78	1.93	1.98	0.02	0.05	0.21
Brokers	0	7.88	29	0	9.80	44	2	17.68	44	0	6.36	22	0	6.56	31	2	12.92	31	1.56	5.86	99.00	0.00	0.09	0.36
Banks	0	7.72	26	1	10.08	25	1	17.80	38	0	6.52	17	1	7.24	21	1	13.76	29	1.75	1.90	1.99	0.01	0.09	0.22
Insurers	0	7.00	22	1	7.56	22	2	14.56	43	0	6.20	18	1	5.28	20	1	11.48	33	1.78	1.92	1.99	0.00	0.07	0.25
January 1999–December 2001																								
Hedge funds	0	5.88	27	1	6.20	22	4	12.08	29	0	4.60	27	0	4.92	18	2	9.52	29	1.78	1.94	1.99	0.00	0.09	0.20
Brokers	0	4.68	16	1	6.12	12	2	10.80	21	0	3.40	11	0	4.00	9	0	7.40	14	1.88	1.94	1.99	0.01	0.12	0.28
Banks	0	3.64	9	1	4.56	10	3	8.20	14	0	2.32	8	0	3.36	8	1	5.68	13	1.90	1.95	1.99	0.01	0.06	0.13
Insurers	0	6.60	21	0	3.92	9	2	10.52	29	0	4.28	18	0	2.64	7	1	6.92	23	1.91	5.92	99.00	0.00	0.06	0.16
January 2002–December 2004																								
Hedge funds	1	8.68	26	0	6.64	16	2	15.32	39	0	6.24	19	0	4.20	15	0	10.44	30	1.84	5.89	99.00	0.00	0.08	0.21
Brokers	0	3.96	12	0	5.64	21	1	9.60	22	0	3.16	9	0	3.52	20	1	6.68	20	1.79	9.86	99.00	0.00	0.08	0.23
Banks	0	6.44	24	0	5.00	14	2	11.44	33	0	4.20	16	0	2.80	10	1	7.00	18	1.86	9.87	99.00	0.00	0.07	0.19
Insurers	0	5.36	19	0	7.16	29	0	12.52	33	0	4.20	13	0	5.24	25	0	9.44	27	1.71	5.89	99.00	0.00	0.09	0.36
January 2006–December 2008																								
Hedge funds	1	14.44	49	0	10.12	36	1	24.56	60	1	12.16	43	0	7.84	31	1	20.00	47	1.64	9.82	99.00	0.00	0.05	0.21
Brokers	2	14.40	44	0	12.32	51	5	26.72	57	2	11.12	36	0	9.20	41	4	20.32	43	1.48	5.84	99.00	0.00	0.06	0.32
Banks	1	8.68	36	2	13.12	51	6	21.80	55	1	7.44	30	0	7.44	38	4	14.88	42	1.48	1.87	1.98	0.01	0.07	0.30
Insurers	2	12.24	29	2	14.20	71	4	26.44	73	1	8.92	21	1	10.84	56	2	19.76	58	1.28	1.86	1.98	0.00	0.07	0.49

Section 3.2, including the various counting measures of the number of connections, and measures of centrality. These metrics provide somewhat different but largely consistent perspectives on how the Granger-causality network of banks, broker/dealers, hedge funds, and insurers changed over the past 15 years.²²

In addition, we explore whether our Granger-causality-network measures are related to firm characteristics for two subperiods: October 2002 to September 2005 and July 2004 to June 2007. We select these two subperiods to provide examples of high and low levels of the number of connections, respectively, as Fig. 4 shows. We conduct a rank regression of all Granger-causality-network measures on firm-specific characteristics such as size, leverage, liquidity, and industry dummies for these subperiods.²³ The results are inconclusive. For the October 2002 to September 2005 period, we find that size is negatively related to the In-from-Other measure, suggesting that smaller firms are more likely to be affected by firms from other industries. Market beta positively affects the Out-to-Other measure. The first-order autocorrelation is significantly associated with the In+Out measure. However, these results are not robust for the July 2004 to June 2007 period. As a result, we do not find any consistent relationships between the Granger-causality-network measures and firm characteristics.

We explore the out-of-sample performance of our Granger-causality measures (individually and jointly with our PCAS measures) including firm characteristics during the crisis periods in Section 6.

5.3. Nonlinear Granger-causality tests

Table 5 presents *p*-values of nonlinear Granger-causality likelihood ratio tests (see Section 3.3) for the monthly residual returns indexes of Banks, Brokers, Insurers, and Hedge funds over the two samples: 1994–2000 and 2001–2008. Given the larger number of parameters in nonlinear Granger-causality tests as compared to linear Granger-causality tests, we use monthly indexes instead of the returns of individual financial institutions and two longer sample periods. Index returns are constructed by value-weighting the monthly returns of individual institutions as described in Section 4. Residual returns are obtained from regressions of index returns against the S&P 500 returns. Index results for linear Granger-causality tests are presented in an online appendix posted at <http://jfe.rochester.edu>. This analysis shows that causal relationships are even stronger if we take into account both the level of the mean and the level of risk that these financial institutions may face, i.e., their volatilities. The presence of strong nonlinear Granger-causality relationships is detected in both samples. Moreover, in the 2001–2008 sample, we find that almost all financial institutions were affected by the past level of risk of other financial institutions.²⁴

²² To compare these measures with the classical measure of correlation, see an online appendix posted at <http://jfe.rochester.edu>.

²³ We thank the referee for suggesting this line of inquiry. Rank regressions are available from the authors upon request.

²⁴ We consider only pairwise Granger causality due to significant multicollinearity among the returns.

Table 5

P-values of nonlinear Granger-causality likelihood ratio tests. *P*-values of nonlinear Granger-causality likelihood ratio tests for the monthly residual returns indexes (from a market-model regression against S&P 500 returns) of Banks, Brokers, Insurers, and Hedge funds for two subsamples: January 1994 to December 2000, and January 2001 to December 2008. Statistics that are significant at the 5% level are shown in bold.

Sector	To			
	Hedge funds	Brokers	Banks	Insurers
January 1994–December 2000				
FROM				
Hedge funds		0.00	0.00	0.00
Brokers	0.00		0.24	0.75
Banks	0.02	0.00		0.78
Insurers	0.07	0.82	0.93	
January 2001–December 2008				
FROM				
Hedge funds		0.00	0.01	0.09
Brokers	0.00		0.00	0.94
Banks	0.21	0.01		0.00
Insurers	0.37	0.00	0.00	

Note that linear Granger-causality tests provide causality relationships based only on the means, whereas nonlinear Granger-causality tests also take into account the linkages among the volatilities of financial institutions. With nonlinear Granger-causality tests we find more interconnectedness between financial institutions compared to linear Granger-causality results, which supports the endogenous volatility feedback relationship proposed by Danielsson, Shin, and Zigrand (2011). The nonlinear Granger-causality results are also consistent with the results of the linear Granger-causality tests in two respects: the connections are increasing over time, and even after controlling for the S&P 500, shocks to one financial institution are likely to spread to all other financial institutions.

6. Out-of-sample results

One important application of any systemic risk measure is to provide early warning signals to regulators and the public. To this end, we explore the out-of-sample performance of our PCAS and Granger-causality measures in Sections 6.1 and 6.2, respectively. In particular, following the approach of Acharya, Pedersen, Philippon and Richardson (2011), we consider two 36-month samples, October 2002–September 2005 and July 2004–June 2007, as estimation periods for our measures, and the period from July 2007–December 2008 as the “out-of-sample” period encompassing the Financial Crisis of 2007–2009. The two sample periods (October 2002–September 2005 and July 2004–June 2007) have been selected to provide two different examples characterized by high and low levels of connectedness in the sample. In the October 2002–September 2005 period, the Cumulative Risk Fraction measure h_n is statistically larger than the threshold H

(as shown in Appendix A) and the number of Granger-causality connections is statistically different than zero as shown by Fig. 4. In the July 2004–June 2007 period, h_n is statistically smaller than H and the number of Granger-causality connections is not statistically different from zero. In Section 6.3, we show that even with the time-varying levels of significance during this period, both measures still yield useful out-of-sample indications of the recent financial crisis.

6.1. PCAS results

When the Cumulative Risk Fraction, h_n , is large, this means that we observe a significant amount of connectedness among financial institutions. To identify when this percentage is large, i.e., to identify a threshold H , we use a simulation approach described in Appendix A. We find that h_1 (i.e., when $n = 1$) should be larger than 33.74% (i.e., H is 33.74%) to exhibit a large degree of connectedness (where n is the fraction of eigenvalues considered, as defined in Section 3.1). When $n = 10$ and 20, H is estimated to be 74.48% and 91.67%, respectively.

For each of the four financial and insurance categories, we consider the top 25 financial institutions as determined by the average AUM for hedge funds and average market capitalization for broker/dealers, insurers, and banks during the time period considered, yielding 100 entities in all. These financial institutions are ranked from one to 100 according to their PCAS.

To evaluate the out-of-sample performance of PCAS, we first compute the maximum percentage financial loss (Max%Loss) suffered by each of the 100 institutions during the crisis period from July 2007 to December 2008.²⁵ We then rank all financial institutions from one to 100 according to Max%Loss. We then estimate univariate regressions for Max%Loss rankings on the institutions' PCAS rankings. We consider PCAS 1, PCAS 1–10, and PCAS 1–20 measures as reported in (8). The results are reported in Table 6 for two samples: October 2002–September 2005 and July 2004–June 2007. For each regression, we report the β coefficient, the t -statistic, p -value, and the Kendall (1938) τ rank-correlation coefficient.

We find that companies more exposed to the overall risk of the system, i.e., those with larger PCAS measures, were more likely to suffer significant losses during the recent crisis. In this respect, the PCAS measure is similar to the marginal expected shortfall (MES) measure proposed by Acharya, Pedersen, Philippon and Richardson (2011). Institutions that have the largest exposures to the 20 largest principal components

²⁵ The maximum percentage loss for a financial institution is defined to be the difference between the market capitalization of the institution (fund size in the case of hedge funds) at the end of June 2007 and the minimum market capitalization during the period from July 2007 to December 2008 divided by the market capitalization or fund size of the institution at the end of June 2007. An additional loss metric is the maximum dollar loss, Max\$Loss, however, this is highly driven by size. We do believe that size is a relevant factor for systemic risk, thus, we chose to include the largest 100 financial institutions in our analysis. We concentrate on Max%Loss in order to capture additional drivers of connectedness.

Table 6

Predictive power of PCAS measures. Regression coefficients, t -statistics, p -values, and Kendall (1938) τ rank-correlation coefficients for regressions of Max%Loss on PCAS 1, PCAS 1–10, and PCAS 1–20. The maximum percentage loss (Max%Loss) for a financial institution is the dollar amount of the maximum cumulative decline in market capitalization or fund size for each financial institution during July 2007–December 2008 divided by the market capitalization or total fund size of the institution at the end of June 2007. These measures are calculated over two samples: October 2002–September 2005 and July 2004–June 2007. Statistics that are significant at the 5% level are displayed in bold.

Measure	Max%Loss			
	Coeff	t -Stat	p -Value	Kendall τ
October 2002–September 2005				
PCAS 1	0.35	3.46	0.00	0.25
PCAS 1–10	0.29	2.83	0.01	0.22
PCAS 1–20	0.29	2.83	0.01	0.22
July 2004–June 2007				
PCAS 1	0.11	1.10	0.28	0.09
PCAS 1–10	0.07	0.73	0.47	0.06
PCAS 1–20	0.09	0.91	0.37	0.07

(the most contemporaneously interconnected) are those that lose the most during the crisis.

As Table 6 shows for the October 2002 to September 2005 period, the rank correlation indicates a strict relationship between PCAS and losses during the recent Financial Crisis of 2007–2009. The beta coefficients are all significant at the 5% level, showing that PCAS correctly identifies firms that will be more affected during crises, i.e., will face larger losses.

However, the percentage of volatility explained by the principal components decreased in July 2004–June 2007, consistent with Fig. 1a. In this case, there is not a strict relationship between the exposure of a single institution to principal components and the losses it may face during the crisis. We have repeated the analysis using the PCAS measure described in (8) where σ_1^2 and σ_2^2 are estimated using a GARCH(1,1) model, and the results are qualitatively unchanged.

6.2. Granger-causality results

We use the same estimation and out-of-sample periods to evaluate our Granger-causality-network measures as in Section 6.1, and for each financial institution, we compute eight Granger-causality-network measures. As before, for each of the four categories of financial institutions, we consider the top 25 as determined by the average AUM for hedge funds and average market capitalization for broker/dealers, insurers, and banks during the time period considered, yielding 100 entities in all. As with the PCAS measure, we rank financial institutions from one to 100 according to Granger-causality-network measures.²⁶

²⁶ The institution with the highest value of a measure is ranked one and the one with the lowest is ranked 100. However, for the Closeness measure, the ranking is reversed: an institution with the lowest Closeness measure is ranked one, and the one with the highest is 100.

To evaluate the predictive power of these rankings, we repeated the out-of-sample analysis done with PCAS measures by first ranking all financial institutions from one to 100 according to Max%Loss. We then estimate univariate regressions for Max%Loss rankings on the institutions' Granger-causality-network rankings. The results are reported in Table 7 for two samples: October 2002–September 2005 and July 2004–June 2007. For each regression, we report the β coefficient, the t -statistic, the p -value, and the Kendall (1938) τ rank-correlation coefficient.

We find that Out, Out-to-Other, In+Out-Other, Closeness, and Eigenvector centrality are significant determinants of the Max%Loss variable.

Based on the Closeness and Eigenvector centrality measures, financial institutions that are highly connected are the ones that suffered the most during the Financial Crisis of 2007–2009. However, the institutions that declined the most during the Crisis were the ones that greatly affected other institutions – in both their own sector and in other sectors – and not the institutions that were affected by others. Both Out and Out-to-Other are significant, whereas In and In-from-Other are not.

Table 7

Predictive power of Granger-causality-network measures. Regression coefficients, t -statistics, p -values, and Kendall (1938) τ rank-correlation coefficients for regressions of Max%Loss on Granger-causality-network measures. The maximum percentage loss (Max%Loss) for a financial institution is the dollar amount of the maximum cumulative decline in market capitalization or fund size for each financial institution during July 2007–December 2008 divided by the market capitalization or total fund size of the institution at the end of June 2007. These measures are calculated over two samples: October 2002–September 2005 and July 2004–June 2007. Statistics that are significant at the 5% level are displayed in bold.

Measure	Max%Loss			
	Coeff	t -Stat	p -Value	Kendall τ
October 2002–September 2005				
# of "In" connections	0.03	0.25	0.80	0.02
# of "Out" connections	0.23	2.23	0.03	0.16
# of "In+Out" connections	0.16	1.51	0.13	0.11
# of "In-from-Other" connections	0.12	1.15	0.25	0.09
# of "Out-to-Other" connections	0.32	3.11	0.00	0.22
# of "In+Out-Other" connections	0.23	2.23	0.03	0.15
Closeness	0.23	2.23	0.03	0.16
Eigenvector centrality	0.24	2.31	0.02	0.16
July 2004–June 2007				
# of "In" connections	–0.01	–0.07	0.94	–0.01
# of "Out" connections	0.25	2.53	0.01	0.20
# of "In+Out" connections	0.19	1.89	0.06	0.13
# of "In-from-Other" connections	–0.02	–0.19	0.85	–0.02
# of "Out-to-Other" connections	0.17	1.68	0.10	0.13
# of "In+Out-Other" connections	0.09	0.84	0.41	0.06
Closeness	0.25	2.53	0.01	0.20
Eigenvector centrality	0.24	2.44	0.02	0.17

6.3. Combined measures

To evaluate the predictive power of PCA and Granger-causality-network measures, we first compute the maximum percentage financial loss (Max%Loss) suffered by each of the 100 institutions during the crisis period from July 2007 to December 2008. We then rank all financial institutions from one to 100 according to Max%Loss. We then estimate univariate regressions for Max%Loss rankings on the institutions' connectedness rankings. The results are reported in Table 8 for two samples: October 2002–September 2005 and July 2004–June 2007. For each regression, we report the β coefficient, the t -statistic, p -value, and the Kendall (1938) τ rank-correlation coefficient.

We find that Out, Out-to-Other, In+Out-Other, Closeness, Eigenvector centrality, and PCAS are significant determinants of the Max%Loss variable. Based on the Closeness and Eigenvector centrality measures, financial institutions that are systemically important and are very interconnected are the ones that suffered the most during the Financial Crisis of 2007–2009. However, the institutions that declined the most during the Crisis were the ones that greatly affected other institutions – in both their own sector and in other sectors – and not the institutions that were affected by others. Both Out and Out-to-Other are significant, whereas In and In-from-Other are not. The top names in the Out and Out-to-Other categories include Wells Fargo, Bank of America, Citigroup, Federal National Mortgage Association, UBS, Lehman Brothers Holdings, Wachovia, Bank New York, American International Group, and Washington Mutual.²⁷

In addition to causal relationships, contemporaneous correlations between financial institutions served as predictors of the crisis. Based on the significance of the PCAS 1 measure,²⁸ companies that were more correlated with other companies and were more exposed to the overall risk of the system, were more likely to suffer significant losses during the recent crisis.²⁹ As early as 2002–2005, important connections among these financial institutions were established that later contributed to the Financial Crisis and the subsequent decline of many of them.³⁰

It is possible that some of our results can be explained by leverage effects.³¹ Leverage has the effect of a magnifying glass, expanding small profit opportunities into larger ones, but also expanding small losses into larger

²⁷ The top 20 ranked financial institutions with respect to the Out-to-Other measure are listed in Table D1 in Appendix D.

²⁸ PCAS 1–10 and PCAS 1–20 are also significant. The same applies if we calculate PCAS 1, PCAS 1–10, or PCAS 1–20 using GARCH(1,1) model. Results are available from the authors upon request.

²⁹ The significance of the PCAS measures decreased in July 2004–June 2007. This is consistent with the result in Fig. 1 where, for the monthly return indexes, the first principal component captured less return variation during this time period than in the October 2002–September 2005 period.

³⁰ We also consider time periods just before and after October 2002–September 2005 that show a significant number of interconnections, and the results are still significant for Out, Out-to-Other, In+Out-Other, Closeness, Eigenvector centrality, and PCAS measures.

³¹ We thank Lasse Pedersen and Mark Carey for suggesting this line of inquiry.

Table 8

Out-of-sample analysis. Parameter estimates of a multivariate rank regression of Max% Loss for each financial institution during July 2007–December 2008 on PCAS 1, leverage, size, first-order autocorrelation, and Granger-causality-network measures. The maximum percentage loss (Max% Loss) for a financial institution is the dollar amount of the maximum cumulative decline in market capitalization or fund size for each financial institution during July 2007–December 2008 divided by the market capitalization or total fund size of the institution at the end of June 2007. PCAS 1, leverage, size, first-order autocorrelation, and Granger-causality-network measures are calculated over October 2002–September 2005 and July 2004–June 2007. Parameter estimates that are significant at the 5% level are shown in bold.

Variable	Coeff	t-Stat	Coeff	t-Stat	Coeff	t-Stat	Coeff	t-Stat	Coeff	t-Stat	Coeff	t-Stat	Coeff	t-Stat	Coeff	t-Stat
October 2002–September 2005																
Intercept	18.57	1.63	11.76	1.10	12.76	1.18	17.49	1.55	9.55	0.90	12.78	1.18	11.76	1.10	12.01	1.11
Leverage	0.19	1.78	0.22	2.13	0.21	1.99	0.18	1.71	0.25	2.40	0.21	1.97	0.22	2.13	0.22	2.11
PCAS 1	0.40	3.07	0.33	2.61	0.37	2.88	0.39	2.99	0.27	2.06	0.34	2.64	0.33	2.61	0.34	2.63
Size	0.07	0.53	0.04	0.31	0.07	0.58	0.08	0.61	0.05	0.37	0.09	0.67	0.04	0.31	0.04	0.30
ρ_1	-0.13	-1.24	-0.12	-1.22	-0.17	-1.61	-0.14	-1.28	-0.11	-1.04	-0.16	-1.55	-0.12	-1.22	-0.10	-1.02
# of "In" connections	0.04	0.35														
# of "Out" connections			0.25	2.50												
# of "In+Out" connections					0.22	2.12										
# of "In-from-Other" connections							0.07	0.62								
# of "Out-to-Other" connections									0.32	2.98						
# of "In+Out-Other" connections											0.23	2.12				
Closeness													0.25	2.50		
Eigenvector centrality															0.22	2.18
R^2	0.19		0.25		0.23		0.19		0.27		0.23		0.25		0.23	
July 2004–June 2007																
Intercept	19.03	1.35	3.91	0.29	-1.20	-0.08	20.27	1.44	4.70	0.33	6.71	0.44	3.91	0.29	10.15	0.77
Leverage	0.18	1.71	0.24	2.28	0.22	2.11	0.18	1.71	0.23	2.18	0.21	1.98	0.24	2.28	0.21	1.99
PCAS 1	0.20	1.44	0.20	1.54	0.28	2.06	0.20	1.42	0.23	1.73	0.25	1.81	0.20	1.54	0.20	1.49
Size	-0.01	-0.08	-0.01	-0.04	0.03	0.20	-0.01	-0.07	0.00	0.03	0.00	0.00	-0.01	-0.04	-0.01	-0.06
ρ_1	0.17	1.51	0.18	1.75	0.21	1.97	0.16	1.47	0.18	1.70	0.20	1.82	0.18	1.75	0.13	1.22
# of "In" connections	0.05	0.49														
# of "Out" connections			0.30	3.03												
# of "In+Out" connections					0.29	2.83										
# of "In-from-Other" connections							0.03	0.30								
# of "Out-to-Other" connections									0.26	2.47						
# of "In+Out-Other" connections											0.20	1.79				
Closeness													0.30	3.03		
Eigenvector centrality															0.26	2.57
R^2	0.09		0.17		0.16		0.08		0.14		0.12		0.17		0.15	

losses. And when unexpected adverse market conditions reduce the value of the corresponding collateral, such events often trigger forced liquidations of large positions over short periods of time. Such efforts to reduce leverage can lead to systemic events as we have witnessed during the recent crisis. Since leverage information is not directly

available, for publicly traded banks, broker/dealers, and insurers, we estimate their leverage as the ratio of Total Assets minus Equity Market Value to Equity Market Value. For hedge funds, we use reported average leverage for a given time period. Using these crude proxies, we find that estimated leverage is positively related to future losses

(Max%Loss). We also adjusted for asset size (as determined by AUM for hedge funds and market capitalization for broker/dealers, insurers, and banks) and the results are not altered by including this additional regressor. In all regressions, asset size is not significant for Max%Loss. This may be due to the fact that our analysis is concentrated on large financial institutions (the top 25 for each sector).

Leverage is also problematic, largely because of illiquidity – in the event of a margin call on a leveraged portfolio, forced liquidations may cause even larger losses and additional margin calls, ultimately leading to a series of insolvencies and defaults as financial institutions withdraw credit. Lo (2002) and Getmansky, Lo, and Makarov (2004) suggest using return autocorrelation to gauge the illiquidity risk exposure of a given financial institution, hence, the multivariate regression of Table 8 is estimated by including the first-order autocorrelation of monthly returns as an additional regressor.

These robustness checks lead us to conclude that, in both sample periods (October 2002–September 2005 and July 2004–June 2007), our results are robust – measures based on Granger-causality and principal components analysis seem to be predictive of the Financial Crisis of 2007–2009.

We also investigate the relationship between our measures of connectedness and the realized tail risk measured by correlation between each firm and the financial system during the Financial Crisis of 2007–2009. The analysis shows that our measures of contemporaneous connections between financial institutions, PCAS 1, 1–10, and 1–20, are all highly related to this realized tail risk (rank regression p -values equal to zero). However, Granger-causality-network measures are not consistently correlated with tail risk, indicating that they are capturing the spillover of losses that are not contemporaneous, but contribute to losses of financial institutions in the wake of systemic shocks.³²

Finally, we consider spillover effects by measuring the performance of firms highly connected to the best-performing and worst-performing firms. Specifically, during the crisis period, we rank 100 firms by performance and construct quintiles from this ranking. Using the “Out” measure of connectedness, we find that firms that have the highest number of significant connections to the worst-performing firms (1st quintile) do worse than firms that are less connected to these poor performers. More specifically, firms in the 2nd quintile exhibit 119 connections with the 1st quintile, and those that have the smallest number of connections (69) with the 1st quintile perform the best, i.e., they are in the 5th quintile. This pattern suggests that there are, indeed, spillover effects in performance that are being captured by Granger-causality networks.

7. Conclusion

The financial system has become considerably more complex over the past two decades as the separation between hedge funds, mutual funds, insurance companies, banks, and broker/dealers has blurred thanks to

financial innovation and deregulation. While such complexity is an inevitable consequence of competition and economic growth, it is accompanied by certain consequences, including much greater interdependence.

In this paper, we propose to quantify that interdependence using principal components analysis and Granger-causality networks. Principal components analysis provides a broad view of connections among all four groups of financial institutions, and Granger-causality networks capture the intricate web of pairwise statistical relations among individual firms in the finance and insurance industries. Using monthly returns data for hedge-fund indexes and portfolios of publicly traded banks, insurers, and broker/dealers, we show that such indirect measures are indeed capable of picking up periods of market dislocation and distress, and have promising out-of-sample characteristics. These measures seem to capture unique and different facets of the finance and insurance sectors. For example, over the recent sample period, our empirical results suggest that the banking and insurance sectors may be even more important sources of connectedness than other parts, which is consistent with the anecdotal evidence from the recent financial crisis. The illiquidity of bank and insurance assets, coupled with the fact that banks and insurers are not designed to withstand rapid and large losses (unlike hedge funds), make these sectors a natural repository for systemic risk.

The same feedback effects and dynamics apply to bank and insurance capital requirements and risk management practices based on VaR, which are intended to ensure the soundness of individual financial institutions, but may amplify aggregate fluctuations if they are widely adopted. For example, if the riskiness of assets held by one bank increases due to heightened market volatility, to meet its VaR requirements the bank will have to sell some of these risky assets. This liquidation may restore the bank's financial soundness, but if all banks engage in such liquidations at the same time, a devastating positive feedback loop may be generated unintentionally. These endogenous feedback effects can have significant implications for the returns of financial institutions, including autocorrelation, increased correlation, changes in volatility, Granger causality, and, ultimately, increased systemic risk, as our empirical results seem to imply.

As long as human behavior is coupled with free enterprise, it is unrealistic to expect that market crashes, manias, panics, collapses, and fraud will ever be completely eliminated from our capital markets. The best hope for avoiding some of the most disruptive consequences of such crises is to develop methods for measuring, monitoring, and anticipating them. By using a broad array of tools for gauging the topology of the financial network, we stand a better chance of identifying “black swans” when they are still cygnets.

Appendices

In this Appendix we provide robustness checks and more detailed formulations and derivations for our connectedness measures. We conduct PCA significance tests in Appendix A. Tests for statistical significance of

³² Results are available from the authors upon request.

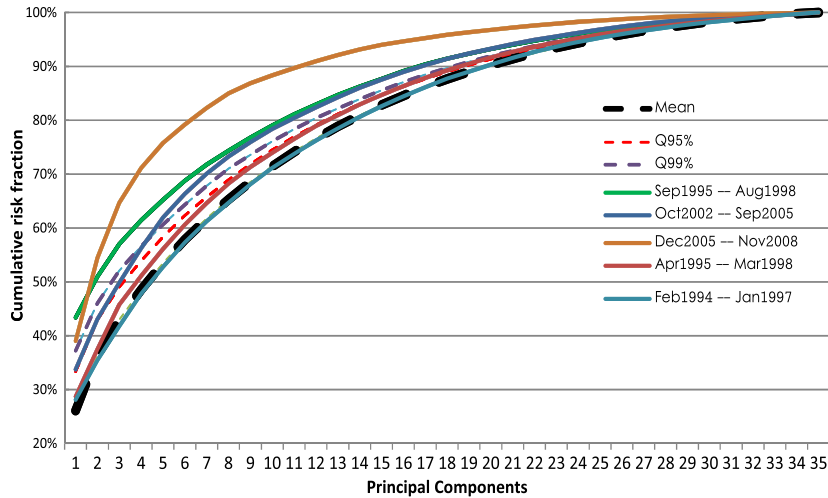


Fig. A1. The fraction of total risk explained by the first 36 principal components. The mean of the lowest quintile and the 95% and the 99% confidence intervals of the simulated distributions are graphed. For the simulated distributions, we exclude periods with h_1 values above the lowest quintile. Tests of significance of the differences in the Cumulative Risk Fraction are presented for the following 36-month rolling periods: September 1995–August 1998, October 2002–September 2005, December 2005–November 2008, February 1994–January 1997, and April 1995–March 1998.

Granger-causality-network measures are in [Appendix B](#). [Appendix C](#) provides some technical details for nonlinear Granger-causality tests. Finally, [Appendix D](#) provides a list of systemically important institutions based on our measures.

Appendix A. PCA significance tests

For the PCA analysis, we employ a 36-month rolling estimate of the principal components over the 1994–2008 sample period. According to [Fig. 1](#) we observe significant changes around August 1998, September 2005, and November 2008 for the first principal component. Below, we devise a test for structural changes in the estimates within the PCA framework across all sample periods to test the significance of these changes.

Defining the Total Risk of the system as $\Omega = \sum_{k=1}^N \lambda_k$ and Cumulative Risk at n eigenvalue as $\omega_n = \sum_{k=1}^n \lambda_k$, the Cumulative Risk Fraction is

$$\frac{\omega_n}{\Omega} \equiv h_n, \quad (\text{A.1})$$

where N is the total number of eigenvalues, λ_k is the k -th eigenvalue, and h_n is the fraction of total risk explained by the first n eigenvalues.

In our analysis we consider 100 institutions and 145 overlapping 36-month time periods. Therefore, h_1 is the fraction of total risk corresponding to the first principal component for each period. For each of the 145 periods, we calculate h_1 , and select the time periods corresponding to the lowest quintile of the h_1 measure (the 20% of the 145 periods having the lowest h_1). We refer to the mean of the lowest quintile h_1 measures as the threshold H .

Excluding periods with h_1 values above the lowest quintile, we averaged elements of a covariance matrix over the remaining periods, obtaining an average covariance matrix, which we used in simulating 100 multivariate normal series for 1000 times.

For each simulation, we compute h_n for each integer n and compute the mean, and 95%, 99%, and 99.5% confidence intervals of the simulated distributions. We then test whether h_n , the fraction of total risk explained by the first n eigenvalues, for each rolling-window time period considered in the analysis is statistically different by checking if it is outside the significance bounds of the simulated distribution.

[Fig. A1](#) presents results for the following 36-month rolling periods: September 1995–August 1998, October 2002–September 2005, December 2005–November 2008, February 1994–January 1997, and April 1995–March 1998. For September 1995–August 1998, October 2002–September 2005, and December 2005–November 2008, we observe statistically significant changes; however, not for the April 1995–March 1998 and February 1994–January 1997 periods. This is consistent with our analysis in [Fig. 1](#) where we observe significant changes around August 1998, September 2005, and November 2008 for the first principal component.

Appendix B. Significance of Granger-causality network measures

In [Fig. 4](#) we graph the total number of connections as a percentage of all possible connections we observe in the real data at the 5% significance level (in black) against 0.055, the 95th percentile of the simulated distribution obtained under the hypothesis of no causal relationships (in a red thin line). We find that for the 1998–1999, 2002–2004, and 2007–2008 periods, the number of causal relationships observed far exceeds the number obtained purely by chance. Therefore, for these time periods, we can affirm that the observed causal relationships are statistically significant.³³

³³ The results are similar for the 1%-level of significance.

To test whether Granger-causal relationships between individual financial and insurance institutions are due to chance, we conduct a Monte Carlo simulation analysis. Specifically, assuming independence among financial institutions, we randomly simulate 100 time series representing the 100 financial institutions' returns in our sample, and test for Granger causality at the 5% level among all possible causal relationships (as in the empirical analysis in Section 5.2, there is a total of 9900 possible causal relationships), and record the number of significant connections. We repeat this exercise 500 times, and the resulting distribution is given in Fig. B1a. This distribution is centered at 0.052, which represents the fraction of significant connections among all possible connections under the null hypothesis of no statistical relation among any of the financial institutions. The area between 0.049 and 0.055 captures 90% of the simulations. Therefore, if we observe more than 5.5% of significant relationships in the real data, our results are unlikely to be the result of type I error.

We also conduct a similar simulation exercise under the null hypothesis of contemporaneously correlated returns with the S&P 500, but no causal relations among

financial institutions. The results are essentially the same, as seen in the histogram in Fig. B1b: the histogram is centered around 0.052, and the area between 0.048 and 0.055 captures 90% of the simulations.

The following provides a step-by-step procedure for identifying Granger-causal linkages.

Because we wish to retain the contemporaneous dependence structure among the individual time series, our working hypothesis is that the dependence arises from a common factor, i.e., the S&P 500. Specifically, to simulate 100 time series (one for each financial institution), we start with the time-series data for these institutions and filter out heteroskedastic effects with a GARCH(1,1) process, as in the linear Granger-causality analysis of Section 5.2. We then regress the standardized residuals on the returns of the S&P 500 index, $R_t^{S\&P500}$:

$$\tilde{R}_t^i = \alpha_i + \beta_i R_t^{S\&P500} + \sigma_i \epsilon_t^i, \quad i = 1, \dots, 100, \quad \epsilon_t^i \sim \text{IID } \mathcal{N}(0, 1) \tag{B.1}$$

and store the parameter estimates $\hat{\alpha}_i$, $\hat{\beta}_i$, and $\hat{\sigma}_i$, to calibrate our simulation's data-generating process, where "IID" denotes independently and identically distributed random variables.

Next, we simulate 36 monthly returns (corresponding to the three-year period in our sample) of the common factor and the residual returns of the 100 hypothetical financial institutions. Returns of the common factor come from a normal random variable with mean and standard deviation set equal to that of the S&P 500 return, $Y_{jt}^{S\&P500}$. The residuals η_{jt}^i are IID standard normal random variables. We repeat this simulation 500 times and obtain the resulting population of our simulated series Y_{jt}^i :

$$Y_{jt}^i = \hat{\alpha}_i + \hat{\beta}_i Y_{jt}^{S\&P500} + \hat{\sigma}_i \eta_{jt}^i, \quad i = 1, \dots, 100, \\ j = 1, \dots, 500, \quad t = 1, \dots, 36. \tag{B.2}$$

For each simulation j , we perform our Granger-causality analysis and calculate the number of significant connections, and compute the empirical distribution of the various test statistics which can then be used to assess the statistical significance of our empirical findings.

In summary, using several methods, we show that our Granger-causality results are not due to chance.

Appendix C. Nonlinear Granger causality

In this section we provide a framework for conducting nonlinear Granger-causality tests.

Let us assume that $Y_t = (S_t, Z_t)$ is a first-order Markov process (or Markov chain) with transition probabilities:

$$P(Y_t | Y_{t-1}, \dots, Y_0) = P(Y_t | Y_{t-1}) = P(S_t, Z_t | S_{t-1}, Z_{t-1}). \tag{C.1}$$

Then, all the information from the past history of the process, which is relevant for the transition probabilities in time t , is represented by the previous state of the process, i.e., the state in time $t-1$. Under the additional assumption that transition probabilities do not vary over time, the process is defined as a Markov chain with stationary transition probabilities, summarized in the transition matrix Π .

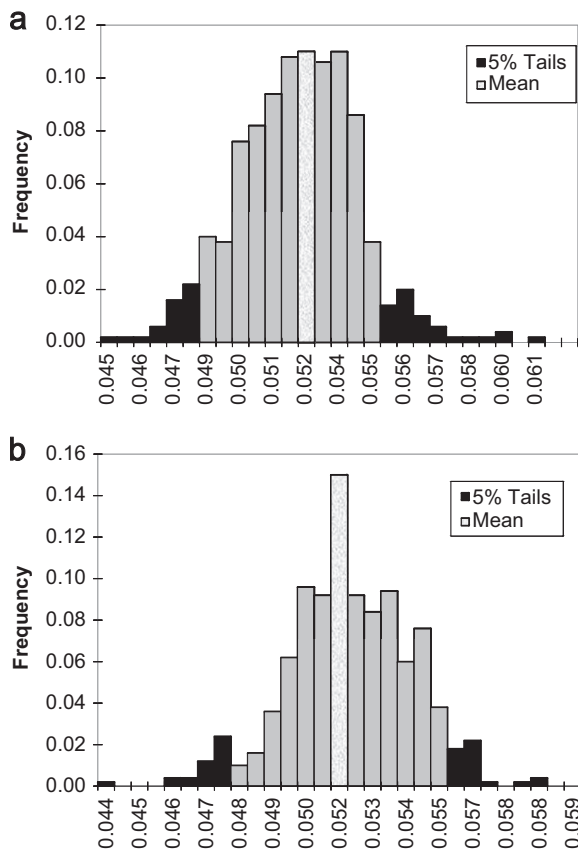


Fig. B1. Histograms of simulated Granger-causal relationships between financial institutions. One hundred time series representing 100 financial institutions' returns are simulated and tested for Granger causality at the 5% level. The number of significant connections out of all possible connections is calculated for 500 simulations. In histogram (a), independence among financial institutions is assumed. In histogram (b), contemporaneous correlation among financial institutions, captured through the dependence on the S&P 500 is allowed.

We can further decompose the joint transition probabilities as follows:

$$\begin{aligned} \Pi &= P(Y_t | Y_{t-1}) = P(S_t, Z_t | S_{t-1}, Z_{t-1}) \\ &= P(S_t | Z_t, S_{t-1}, Z_{t-1}) \times P(Z_t | S_{t-1}, Z_{t-1}) \end{aligned} \tag{C.2}$$

and thus define the Granger non-causality for a Markov chain as

Definition 1. Strong one-step-ahead non-causality for a Markov chain with stationary transition probabilities, i.e., Z_{t-1} does not strongly cause S_t given S_{t-1} if

$$\forall t P(S_t | S_{t-1}, Z_{t-1}) = P(S_t | S_{t-1}). \tag{C.3}$$

Similarly, S_{t-1} does not strongly cause Z_t given Z_{t-1} if

$$\forall t P(Z_t | Z_{t-1}, S_{t-1}) = P(Z_t | Z_{t-1}). \tag{C.4}$$

The Granger non-causality tests in this framework are based on the transition matrix Π that can be represented using an alternative parametrization. The transition matrix Π can, in fact, be represented through a logistic function. More specifically, when we consider two-state Markov chains, the joint probability of S_t and Z_t can be represented as follows:

$$\begin{aligned} P(S_t, Z_t | S_{t-1}, Z_{t-1}) &= P(S_t | Z_t, S_{t-1}, Z_{t-1}) \times P(Z_t | S_{t-1}, Z_{t-1}) \\ &= \frac{\exp(\alpha' V_t)}{1 + \exp(\alpha' V_t)} \times \frac{\exp(\beta' U_t)}{1 + \exp(\beta' U_t)}, \end{aligned} \tag{C.5}$$

where

$$\begin{aligned} V_t &= (1, Z_t)' \otimes (1, S_{t-1})' \otimes (1, Z_{t-1})' \\ &= (1, Z_{t-1}, S_{t-1}, S_{t-1}Z_{t-1}, Z_t, Z_tZ_{t-1}, Z_tS_{t-1}, Z_tZ_{t-1}S_{t-1})' \end{aligned} \tag{C.6}$$

the vectors α and β have dimensions (8×1) and (4×1) , respectively,

$$U_t = (1, S_{t-1}, Z_{t-1}, Z_{t-1}S_{t-1})' = (1, Z_{t-1})' \otimes (1, S_{t-1})', \tag{C.7}$$

where \otimes denotes the Kronecker product. U_t is an invertible linear transformation of

$$U_t^* = [(1 - S_{t-1})(1 - Z_{t-1}), S_{t-1}(1 - Z_{t-1}), (1 - S_{t-1})Z_{t-1}, S_{t-1}Z_{t-1}]' \tag{C.8}$$

that represents the four mutually exclusive dummies representing the four states of the process at time $t - 1$, i.e., $[00, 10, 01, 11]'$. Given this parametrization, the conditions for strong one-step-ahead non-causality are easily determined as restrictions on the parameter space.

To impose Granger non-causality (as in Definition 1), it is necessary that the dependence on S_{t-1} disappears in the second term of the decomposition. Thus, it is simply required that the parameters of the terms of U_t depending on S_{t-1} are equal to zero:

$$H_{S \rightarrow Z} (S \not\Rightarrow Z) : \beta_2 = \beta_4 = 0. \tag{C.9}$$

Under $H_{S \rightarrow Z}$, S_{t-1} does not strongly cause one-step-ahead Z_t given Z_{t-1} . The terms S_{t-1} and $S_{t-1}Z_{t-1}$ are excluded from U_t , hence, $P(Z_t | S_{t-1}, Z_{t-1}) = P(Z_t | Z_{t-1})$.

Both hypotheses can be tested in a bivariate regime-switching model using a Wald test or a Likelihood ratio test. In the empirical analysis, bivariate regime-switching models have been estimated by maximum likelihood using Hamilton's (1994) filter and in all our estimations, we compute the robust covariance matrix estimators (often known as the sandwich estimator) to calculate the standard errors (see Huber, 1981; White, 1982).

Appendix D. Systemically important financial institutions

Another robustness check of our connectedness measures is to explore their implications for individual

Table D1

Systemically important financial institutions. Granger-causality-network-based measures for a sample of 100 financial institutions consisting of the 25 largest banks, broker/dealers, insurers, and hedge funds (as determined by average AUM for hedge funds and average market capitalization for broker/dealers, insurers, and banks) for the sample period from October 2002 to September 2005. Only the 20 highest-scoring institutions based on Out-to-Other and aggregate measures are displayed. The aggregate measure is an aggregation of the Out-to-Other, Leverage, and PCAS 1–20 measures. The maximum percentage loss (Max%Loss) for a financial institution is the dollar amount of the maximum cumulative decline in market capitalization or fund size for each financial institution during July 2007–December 2008 divided by the market capitalization or total fund size of the institution at the end of June 2007. All connections are based on Granger-causality-network statistics at the 5% level of statistical significance.

Out-to-Other	Aggregate measure	Max percentage loss
WELLS FARGO & CO NEW	DEUTSCHE BANK AG	PERRY PARTNERS LP
PROGRESSIVE CORP OH	U B S AG	EDWARDS A G INC
BANK OF AMERICA CORP	FEDERAL NATIONAL MORTGAGE ASSN	CANYON VALUE REALIZATION (CAYMAN) LTD (A)
STEWART W P & CO LTD	TOMASETTI INVESTMENT LP	C I T GROUP INC NEW
UNITEDHEALTH GROUP INC	LEHMAN BROTHERS HOLDINGS INC	TOMASETTI INVESTMENT LP
INVESTMENT TECHNOLOGY GP INC NEW	C I G N A CORP	BEAR STEARNS COMPANIES INC
CITIGROUP INC	JEFFERIES GROUP INC NEW	ACE LTD
U B S AG	CITIGROUP INC	LEHMAN BROTHERS HOLDINGS INC
FEDERAL NATIONAL MORTGAGE ASSN	INVESTMENT TECHNOLOGY GP INC NEW	WASHINGTON MUTUAL INC
AMERICAN EXPRESS CO	LINCOLN NATIONAL CORP IN	KINGATE GLOBAL LTD USD SHARES
AMBAC FINANCIAL GROUP INC	AMERICAN INTERNATIONAL GROUP INC	FEDERAL HOME LOAN MORTGAGE CORP
KINGATE GLOBAL LTD USD SHARES	BEAR STEARNS COMPANIES INC	FEDERAL NATIONAL MORTGAGE ASSN
T ROWE PRICE GROUP INC	ACE LTD	RADIAN GROUP INC
JEFFERIES GROUP INC NEW	C I T GROUP INC NEW	AMERICAN INTERNATIONAL GROUP INC
X L CAPITAL LTD	WASHINGTON MUTUAL INC	AMBAC FINANCIAL GROUP INC
M B N A CORP	RAYMOND JAMES FINANCIAL INC	STEWART W P & CO LTD
M B I A INC	BANK OF AMERICA CORP	M G I C INVESTMENT CORP WIS
GRAHAM GLOBAL INVESTMENT K4D-10	STEWART W P & CO LTD	WACHOVIA CORP 2ND NEW
AMERICAN INTERNATIONAL GROUP INC	PROGRESSIVE CORP OH	HARTFORD FINANCIAL SVCS GROUP IN
ACE LTD	HARTFORD FINANCIAL SVCS GROUP IN	X L CAPITAL LTD

financial institutions. In this section we provide a simple comparison between the rankings of individual institutions according to our measures with the rankings based on subsequent financial losses. Consider first the Out-to-Other Granger-causality-network measure, estimated over the October 2002–September 2005 sample period. We rank all financial institutions based on this measure, and the 20 highest-scoring institutions are presented in Table D1, along with the 20 highest-scoring institutions based on the maximum percentage loss (Max%Loss) during the crisis period from July 2007 to December 2008.³⁴ We find an overlap of seven financial institutions between these two rankings.

In Table 8 we showed that in addition to Out-to-Other, Leverage and PCAS were also significant in predicting Max%Loss. Therefore, it is possible to sharpen our prediction by ranking financial institutions according to a simple aggregation of all three measures. To that end, we multiply each institution's ranking according to Out-to-Other, Leverage, and PCAS 1–20 by their corresponding beta coefficients from Table 8, sum these products, and then re-rank all financial institutions based on this aggregate sum. The 20 highest-scoring institutions according to this aggregate measure, estimated using data from October 2002–September 2005, are presented in Table D1. In this case we find an overlap of 12 financial institutions (among the top 20) and most of the rest (among the top 30) with financial institutions ranked on Max%Loss. This improvement in correspondence and reduction in “false positives” suggests that our aggregate ranking may be useful in identifying systemically important entities.

References

- Acharya, V., Richardson, M. (Eds.), 2009. *Restoring Financial Stability: How to Repair a Failed System*. John Wiley & Sons, New York.
- Acharya, V., Pedersen, L.H., Philippon, T., Richardson, M., 2011. Measuring systemic risk. Unpublished working paper. New York University.
- Adrian, T., Brunnermeier, M., 2010. CoVaR. Unpublished working paper. Princeton University and Federal Reserve Bank of New York.
- Allen, F., Gale, D., 1994. Liquidity preference, market participation and asset price volatility. *American Economic Review* 84, 933–955.
- Allen, F., Gale, D., 1998. Optimal financial crisis. *Journal of Finance* 53, 1245–1284.
- Allen, F., Gale, D., 2000. Financial contagion. *Journal of Political Economy* 108, 1–33.
- Allen, F., Babus, A., Carletti, E. Asset commonality, debt maturity and systemic risk. *Journal of Financial Economics*, doi:10.1016/j.jfineco.2011.07.003, this issue.
- Amihud, Y., Mendelson, H., 1986. Asset pricing and the bid-ask spread. *Journal of Financial Economics* 17, 223–249.
- Battiston, S., Delli Gatti, D., Gallegati, M., Greenwald, B.C., Stiglitz, J.E., 2009. Liasons dangereuses: increasing connectivity, risk sharing, and systemic risk. Unpublished working paper. NBER working paper no. 15611.
- Billio, M., Pelizzon, L., 2000. Value-at-risk: a multivariate switching regime approach. *Journal of Empirical Finance* 7, 531–554.
- Billio, M., Getmansky, M., Pelizzon, L., 2011. Crises and hedge fund risks. Unpublished working paper. Ca' Foscari University of Venice and University of Massachusetts at Amherst.
- Boyson, N.M., Stahel, C.W., Stulz, R.M., 2010. Hedge fund contagion and liquidity shocks. *Journal of Finance* 5, 1789–1816.
- Brennan, M.J., Chordia, T., Subrahmanyam, A., 1998. Alternative factor specifications, security characteristics and the cross-section of expected stock returns. *Journal of Financial Economics* 49, 345–373.
- Brunnermeier, M., Pedersen, L.H., 2009. Market liquidity and funding liquidity. *Review of Financial Studies* 22, 2201–2238.
- Brunnermeier, M., 2009. Deciphering the liquidity and credit crunch 2007–2008. *Journal of Economic Perspectives* 23, 77–100.
- Buraschi, A., Porchia, P., Trojani, F., 2010. The cross-section of expected stock returns: learning about distress and predictability in heterogeneous orchards. Unpublished working paper. Imperial College, IE Business School, and Swiss Finance Institute.
- Castiglionesi, F., Feriozzi, F., Lorenzoni, G., 2009. Financial integration, liquidity, and the depth of systemic crisis. Unpublished working paper. Massachusetts Institute of Technology and University of Tilburg.
- Chan, N., Getmansky, M., Haas, S.M., Lo, A.W., 2006. Systemic risk and hedge funds. In: Carey, M., Stulz, R. (Eds.), *The Risks of Financial Institutions*, University of Chicago Press, Chicago, IL, pp. 235–338.
- Chordia, T., Roll, R., Subrahmanyam, A., 2000. Commonality in liquidity. *Journal of Financial Economics* 56, 3–28.
- Chordia, T., Roll, R., Subrahmanyam, A., 2001. Market liquidity and trading activity. *Journal of Finance* 56, 501–530.
- Chordia, T., Roll, R., Subrahmanyam, A., 2002. Order imbalance, liquidity and market returns. *Journal of Financial Economics* 65, 111–130.
- Danielsson, J., Shin, H.S., Zigrand, J., 2011. Balance sheet capacity and endogenous risk. Unpublished working paper. London School of Economics and Princeton University.
- De Bandt, O., Hartmann, P., 2000. Systemic risk: a survey. European Central Bank working paper no. 35.
- Fung, W., Hsieh, D.A., 2000. Performance characteristics of hedge funds and commodity funds: natural versus spurious biases. *Journal of Financial and Quantitative Analysis* 35, 291–307.
- Geneva Association Systemic Risk Working Group, 2010. *Systemic Risk in Insurance: An Analysis of Insurance and Financial Stability*. Geneva, Switzerland.
- Getmansky, M., Lo, A.W., Makarov, I., 2004. An econometric analysis of serial correlation and illiquidity in hedge-fund returns. *Journal of Financial Economics* 74, 529–609.
- Glosten, L., Harris, L., 1988. Estimating the components of the bid/ask spread. *Journal of Financial Economics* 21, 123–142.
- Gray, D., 2009. Modeling financial crises and sovereign risks. *Annual Review of Financial Economics* 1, 117–144.
- Hamilton, J.D., 1994. *Time Series Analysis*. Princeton University Press, Princeton, NJ.
- Huang, X., Zhou, H., Zhu, H., 2011. Systemic risk contribution. Unpublished working paper 2011-08. Board of Governors of the Federal Reserve System.
- Huber, P.J., 1981. *Robust Statistics*. John Wiley & Sons, New York.
- International Monetary Fund, Bank for International Settlements, and Financial Stability Board, 2009. Guidance to assess the systemic importance of financial institutions, markets and instruments: initial considerations. Report to the G20 Finance Ministers and Governors. October 2009.
- Kendall, M., 1938. A new measure of rank correlation. *Biometrika* 30, 81–89.
- Lillo, F., Farmer, J.D., Mantegna, R.N., 2003. Econophysics: master curve for price-impact function. *Nature* 421, 129–130.
- Lo, A.W., Wang, J., 2000. Trading volume: definitions, data analysis, and implications of portfolio theory. *Review of Financial Studies* 13, 257–300.
- Lo, A.W., 2001. Risk management for hedge funds: introduction and overview. *Financial Analysts Journal* 57, 16–33.
- Lo, A.W., 2002. The statistics of Sharpe ratios. *Financial Analysts Journal* 58, 36–50.
- Lo, A.W., Mamaysky, H., Wang, J., 2001. Foundations of technical analysis: computational algorithms, statistical inference, and empirical implementation. *Journal of Finance* 55, 1705–1765.
- Muirhead, R.J., 1982. *Aspects of Multivariate Statistical Theory*. John Wiley & Sons, New York.
- Pastor, L., Stambaugh, R., 2003. Liquidity risk and expected stock returns. *Journal of Political Economy* 111, 642–685.
- Rajan, R., 2006. Has finance made the world riskier? *European Financial Management* 12, 499–533.
- Reinhart, C.M., Rogoff, K.S., 2009. *This Time Is Different: Eight Centuries of Financial Folly*. Princeton University Press, Princeton, NJ.
- Sadka, R., 2006. Momentum and post-earnings-announcement drift anomalies: the role of liquidity risk. *Journal of Financial Economics* 80, 309–349.
- Schwarz, G.E., 1978. Estimating the dimension of a model. *Annals of Statistics* 6, 461–464.
- White, H., 1982. Maximum likelihood estimation of misspecified models. *Econometrica* 50, 1–25.

³⁴ The first 11 financial institutions in Max%Loss ranking were bankrupt, therefore, representing the same Max%Loss equalled to 100%.